



**HDB'S SALES LAUNCH
NOVEMBER 2021**



PARC CLOVER @ TENGAH

Parc Clover @ Tengah will be bounded by Tengah Park Avenue, Tengah Boulevard, and Tengah Drive. Set in lush greenery, the name Parc Clover @ Tengah is inspired by the clover-like arrangement of its residential blocks, which are arranged in four clusters, each with a central courtyard.

You can choose your home from 1,124 units of 2-room Flexi, 3-, 4-, and 5-room flats, which will be housed in 12 residential blocks ranging from 8 to 14 storeys, with some blocks housing rental flats. Flats in this development will have a shorter waiting time.





Artist's impression

Rest and relax at the variety of green spaces available in the development, such as sky terraces at one of the residential blocks, and roof gardens above the Multi-Storey Car Park and at some of the residential blocks. You will also find facilities to help you stay active, such as children's playgrounds and adult and elderly fitness stations in the development. A childcare centre will be located in Parc Clover @ Tengah for your convenience. Please refer to the site plan for the facilities provided in the development. Facilities in this development will be accessible by the public.



ABOUT TENGAH TOWN

Homes in Tengah town will be surrounded by lush greenery and nature. To harness nature's benefits for greater environmental health and residents' well-being, HDB has applied its Biophilic Town Framework to guide the enhancement of existing natural assets and the design and development of neighbourhood landscapes in Tengah. Residents can look forward to nature-centric neighbourhoods that offer a strong sense of place, better well-being, and an enhanced quality of life.

A town-wide Active, Beautiful, and Clean Waters design strategy will be introduced to draw people closer to nature, with a variety of outdoor spaces and landscape features which slow down and treat stormwater runoff. For more details on Tengah town, you may visit HDB's exhibition (<https://www20.hdb.gov.sg/fi10/fi10349p.nsf/tengah/indexcopy.html>) at HDB Hub, Toa Payoh.

Tengah will be the first town to integrate housing developments with the area's surrounding greenery and biodiversity. One major attraction will be the approximately 100-metre wide and 5km long Forest Corridor, which will form part of the larger network of greenery that connects the Western Water Catchment Area and the Central Catchment Nature Reserve. In collaboration with the National Parks Boards, various tree species will be planted in the Forest Corridor to transform it into a rich forest habitat.



Complementing the Forest Corridor is the Forest Fringe, a 15- to 20-metre wide linear greenscape that will provide a tranquil and rustic environment for residents to enjoy flora and fauna, and envelop the town within a scenic and natural landscape. In addition, extensive park spaces, such as the Central Park and Community Farmways, will string key amenities and facilities together, providing a safe environment for residents to access their daily amenities.

Tengah will be the first HDB town to have a car-free town centre nestled next to a lush green park. To encourage green commuting, there will be dedicated walking and cycling paths along all roads to create seamless connections within the town. The upcoming Jurong Region Line and bus services will serve the public transport needs of residents.

Tengah is also the first HDB town to be planned with town-wide smart technologies from the outset. Guided by HDB's Smart Town Framework, the various districts will integrate smart technology in its design, so that residents can enjoy a quality living environment. Autonomous vehicles will be piloted in Tengah town to provide convenient first-mile-last-mile connection to key transport nodes and amenities.

Vibrant commercial facilities are planned for the town centre and in the districts, complementing other shopping and dining options in the nearby Bukit Batok town. Check out the heartland shops on Where2Shop@HDB. (<https://www.hdb.gov.sg/cs/infoweb/residential/where2shop/explore/bukit-batok>).



Park District

ABOUT PARK DISTRICT

Park District is located at the heart of Tengah, nestled within a lush park.

Residents can enjoy quality living amidst greenery, and connect with the community through a myriad of amenities and green spaces. There are green and blue spaces found within Park District, such as the Plantation and Garden Farmways, Rainforest Walk, Forest Stream, green links, rain gardens, and skyrise greenery. These spaces provide visual relief, and create more outdoor recreational opportunities for residents.

Park District is also home to the Market Place, Singapore's first car-free HDB town centre which will provide a safe environment for walking and cycling. The town centre will be set amidst a lush park, with vehicles plying underneath the town centre. It will offer a greener, car-lite, people-friendly, and pedestrian-friendly environment.

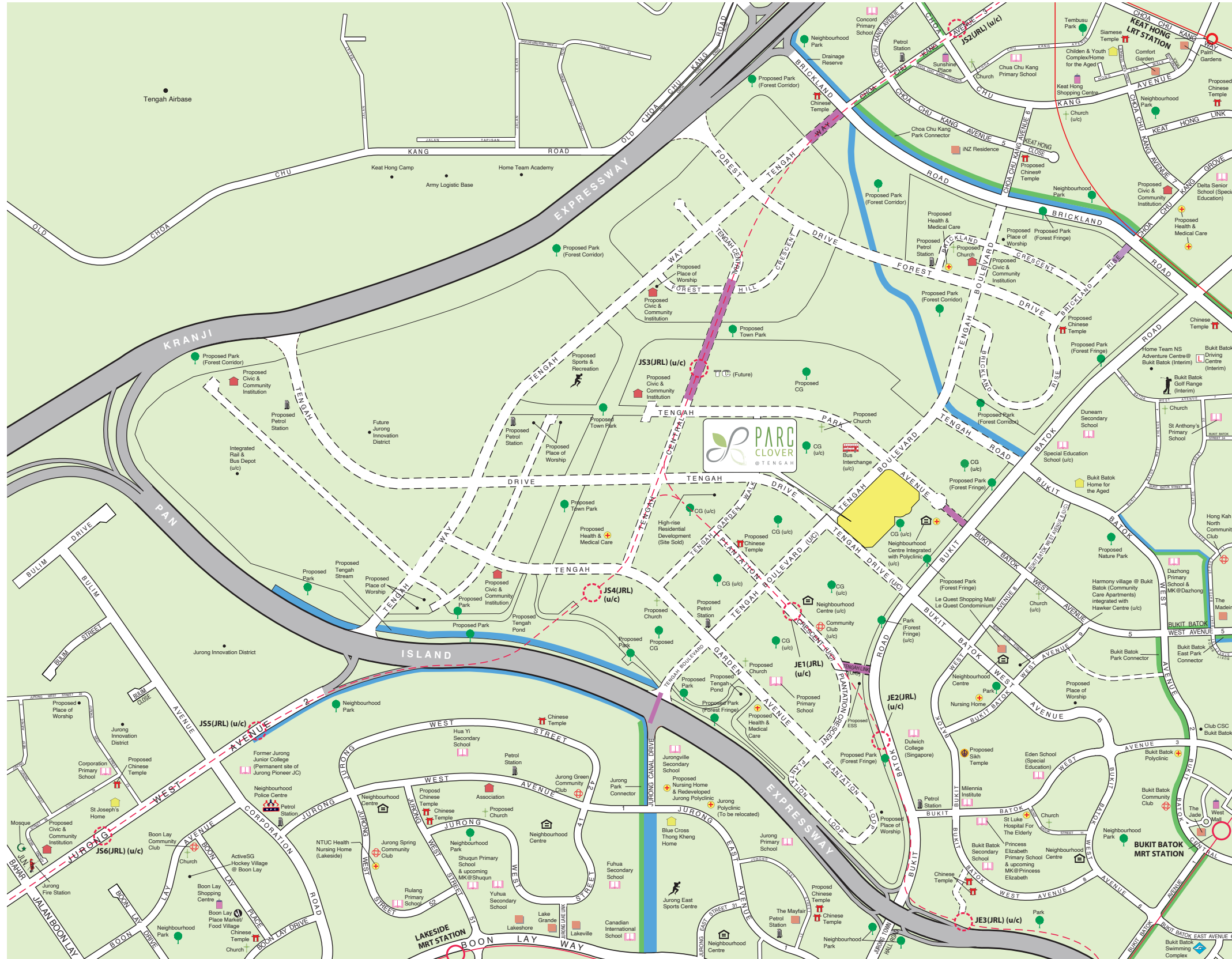
IMPORTANT NOTES

HDB precincts are planned to serve the evolving needs of the community. There are spaces catered for future inclusion of amenities/ facilities (such as childcare centres, elderly-related facilities, education centres, residents' network centres, day activity centres, etc), commercial facilities (such as shops and eating houses), mechanical and electrical rooms, and such other facilities depending on the prevailing needs. These spaces could be in the void decks, common property, car parks, or stand-alone community buildings.

In addition, housing projects may be located near roads, railways, airbases, and land used for non-residential purposes. Hence, residents may experience higher noise levels. We have provided information on the surrounding land use, proposed facilities and their locations in the maps and plans of individual projects, where feasible. The information provided is indicatively based on the current planning intent of the relevant authorities and is subject to change from time to time.



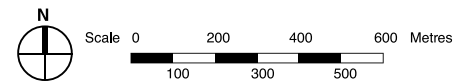
TENGAH



- MRT Line & Station
- - -○- - - MRT Line & Station (u/c)
- LRT Line & Station
- CG Common Green
- Under Construction/Future Road
- (u/c) Under Construction
- ESS Electrical Substation
- Future Transit Priority Corridor
- MK MOE Kindergarten

Notes:

1. All proposed developments and facilities as well as their locations shown are indicative only and are subject to change and planning approval. The implementation of such proposed developments and facilities is subject to review from time to time by the relevant authorities.
2. Proposed Place of Worship includes examples such as Church, Mosque, Chinese Temple, Hindu Temple, etc.
3. Proposed Civic & Community Institution includes examples such as Community Centre/Club, Association, Home for the Aged, etc.
4. Proposed Health & Medical Care includes examples such as Hospitals, Polyclinics, Clinics, Nursing Homes and Eldercare Facilities, etc.
5. The developments and facilities shown (whether existing or proposed) may include other ancillary uses allowed under URA's prevailing Development Control guidelines. For example, places of worship and funeral parlours may include columbarium, community centres may include childcare centres, and schools may be upgraded or built with higher-rise blocks.
6. Transit Priority Corridors (TPCs) are corridors that put together a combination of bus priority solutions to enhance bus priority. Features may include existing measures such as bus lanes or new concepts such as bus-only roads.
7. In view of the COVID-19 situation, temporary COVID-19 related facilities may be set up near residential areas by the relevant authorities.



The information contained herein is subject to change at any time without notice and cannot form part of an offer or contract. While reasonable care has been taken in providing this information, HDB shall not be responsible in any way for any damage or loss suffered by any person whether directly or indirectly as a result of reliance on the said information or as a result of any error or omission therein.

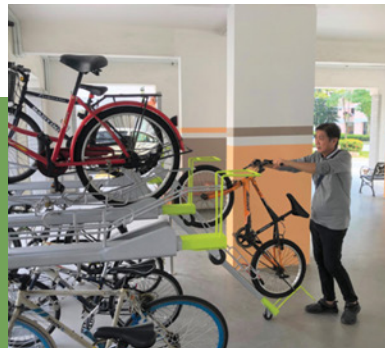
ECO-FRIENDLY FEATURES

To encourage green and sustainable living, Parc Clover @ Tengah will have several eco-friendly features such as:

- Separate chutes for recyclable waste
- Regenerative lifts to reduce energy consumption
- Bicycle stands to encourage cycling as an environmentally-friendly form of transport
- Parking spaces to facilitate future provision of electrical vehicle charging stations
- Use of sustainable products in the development
- Active, Beautiful, Clean Waters design features to clean rainwater and beautify the landscapes



SEPARATE CHUTES
FOR RECYCLABLE
WASTE



BICYCLE
STANDS



ABC WATERS DESIGN
FEATURES

SMART SOLUTIONS

Parc Clover @ Tengah will come with the following smart solutions to reduce energy usage, and contribute to a more sustainable and safer living environment:

- Smart-enabled homes with provisions to support easy installation of smart systems
- Smart Lighting in common areas to reduce energy usage
- Smart Pneumatic Waste Conveyance System to optimise the deployment of resources for cleaner and fuss-free waste disposal



CENTRALISED COOLING SYSTEM

Home owners at Parc Clover @ Tengah can subscribe to have air conditioning provided from a centralised cooling system. This system for public housing is the first of its kind in Singapore.

Cooling to each household unit will come from highly energy efficient chillers, and home owners need not install nor maintain outdoor condensing units on their air-conditioner ledge. They will get to enjoy cost savings while contributing to a sustainable lifestyle in this eco-friendly district. Home owners may decide to subscribe to the centralised cooling system after signing the Agreement for Lease. More information will be provided during the flat selection exercise.

For further enquiries, please contact SP Group at tengahcooling@spgroup.com.sg or visit mytengah.sg (<https://mytengah.sg>).



FINISHES AND FITTINGS

To boost construction productivity, Parc Clover @ Tengah will be built using the Prefabricated Prefinished Volumetric Construction (PPVC) method. The flats will come with full floor finishes, internal doors, and sanitary fittings.

2-ROOM FLEXI

Available either on a 99-year lease or short-lease

- Vinyl strip flooring in the:
 - Living/ dining
 - Bedroom
- Floor tiles in the:
 - Bathroom
 - Household shelter
 - Kitchen
- Wall tiles in the:
 - Bathroom
 - Kitchen
- A sliding partition/ door for the bedroom and folding bathroom door
- Sanitary fittings, i.e. wash basin with tap mixer, shower set with bath/ shower mixer, and water closet suite
- Grab bars (for 2-room Flexi flats on short-leases)

3-, 4- AND 5-ROOM

- Vinyl strip flooring in the:
 - Living/ dining
 - Bedroom
- Floor tiles in the:
 - Bathrooms
 - Household shelter
 - Kitchen/ utility
- Wall tiles in the:
 - Bathrooms
 - Kitchen/ utility
- Internal doors for bedrooms and folding doors for bathrooms
- Sanitary fittings, i.e. wash basin with tap mixer, shower set with bath/ shower mixer, and water closet suite

OPTIONAL COMPONENT SCHEME

Elderly buyers of short-lease 2-room Flexi flats can opt in for elderly-friendly and other fittings under the Optional Component Scheme (OCS). Please refer to the attached OCS leaflet for details.

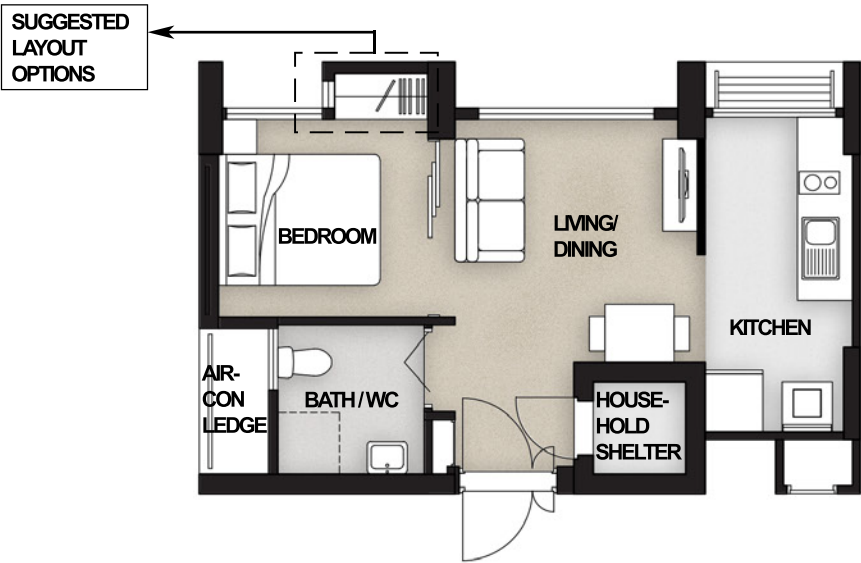
If an elderly buyer opts in for the OCS, the cost of the optional components will be added to the price of the 2-room Flexi flat.

LAYOUT IDEAS

2-ROOM FLEXI (TYPE 1) FLOOR PLAN (With Suggested Furniture Layout)

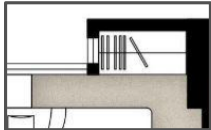
Approx. Floor Area 40sqm

Inclusive of Internal Floor Area of 38sqm and Air-con Ledge

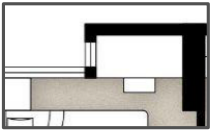


The space abutting the windows in the bedroom could be designed for built-in wardrobes, storage or as a study area as part of your renovation.

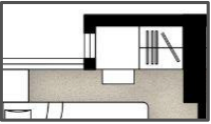
Layout Option A:
Full height wardrobe



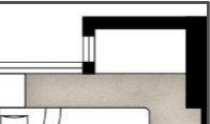
Layout Option B:
Study desk with drawers and overhead shelves



Layout Option C:
Vanity desk with Wardrobe and shelf



Layout Option D:
Reading corner seat with storage

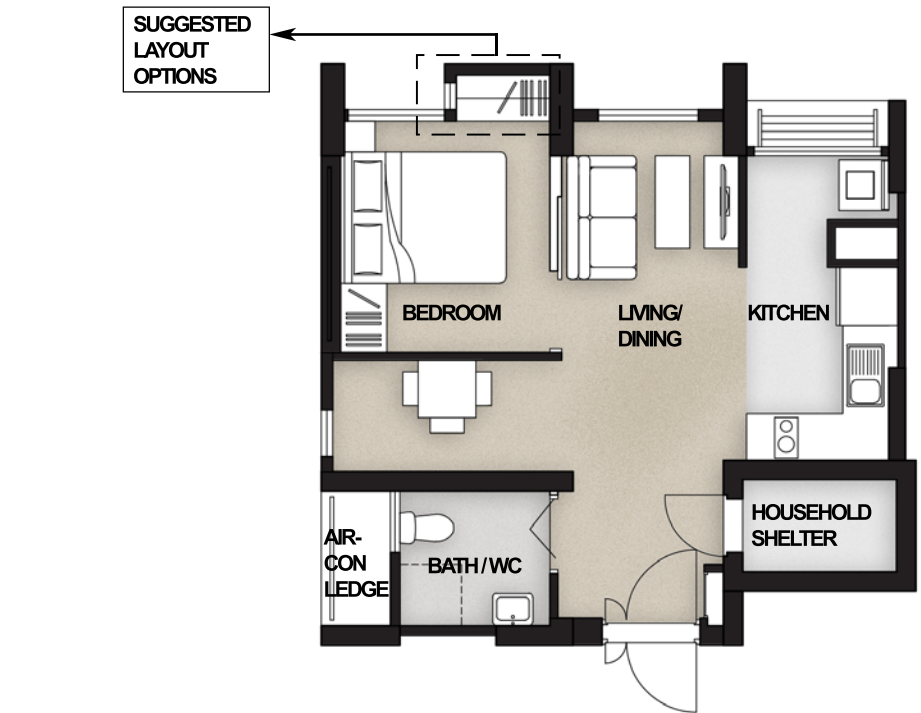
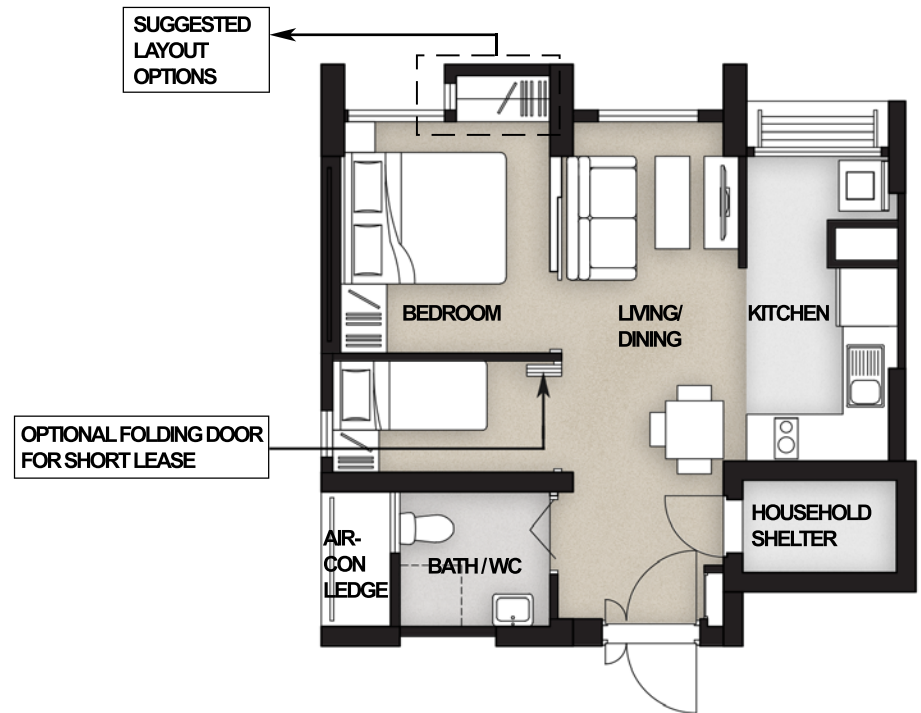


LAYOUT IDEAS

2-ROOM FLEXI (TYPE 2) FLOOR PLAN (With Suggested Furniture Layout)

Approx. Floor Area 48sqm

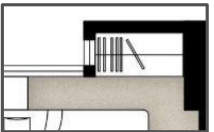
Inclusive of Internal Floor Area of 46sqm and Air-con Ledge



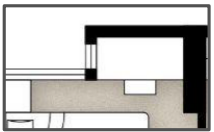
To meet different lifestyle needs, the 46-sqm 2-room Flexi flats come with a flexible space which flat buyers can use according to their preference. This flexible space can be used for dining, a study, or to place an extra bed.

The space abutting the windows in the bedroom could be designed for built-in wardrobes, storage or as a study area as part of your renovation.

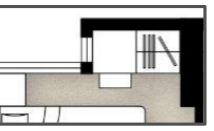
Layout Option A: Full height wardrobe



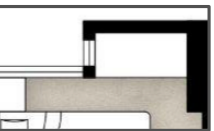
Layout Option B: Study desk with drawers and overhead shelves



Layout Option C: Vanity desk with Wardrobe and shelf



Layout Option D: Reading corner seat with storage



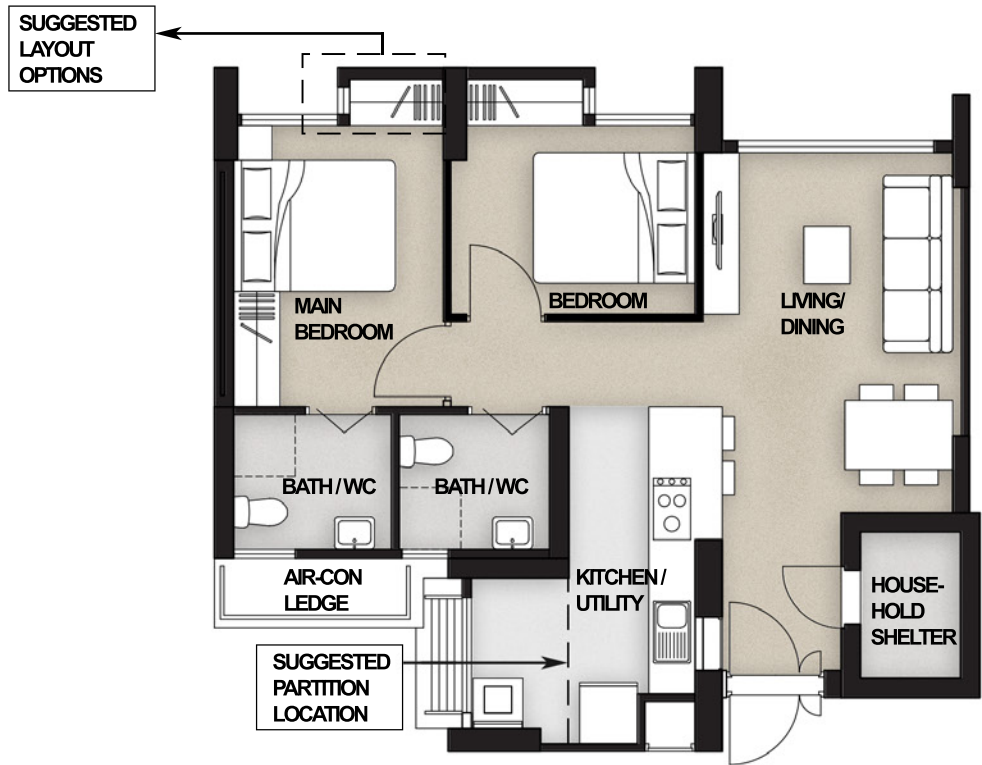
LAYOUT IDEAS

3-ROOM FLOOR PLAN (With Suggested Furniture Layout)

Approx. Floor Area 71sqm

Inclusive of Internal Floor Area of 68sqm and Air-con Ledge

*Approx. floor area for 3-room ranges from 70-71 sqm.



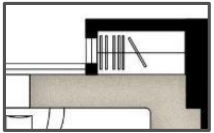
To cater to changing lifestyles and provide more flexibility in the use of kitchen space, HDB has designed the 3-room flats with a combined kitchen/utility space.

The layout offers homeowners flexibility in configuring the area according to their preferences.

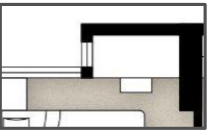
For example, you can add a partition to separate the utility from Kitchen.

The space abutting the windows in the main bedroom and common bedroom could be designed for built-in wardrobes, storage or as a study area as part of your renovation.

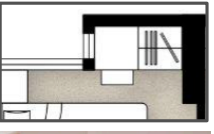
Layout Option A: Full height wardrobe



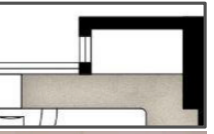
Layout Option B: Study desk with drawers and overhead shelves



Layout Option C: Vanity desk with Wardrobe and shelf



Layout Option D: Reading corner seat with storage



LAYOUT IDEAS

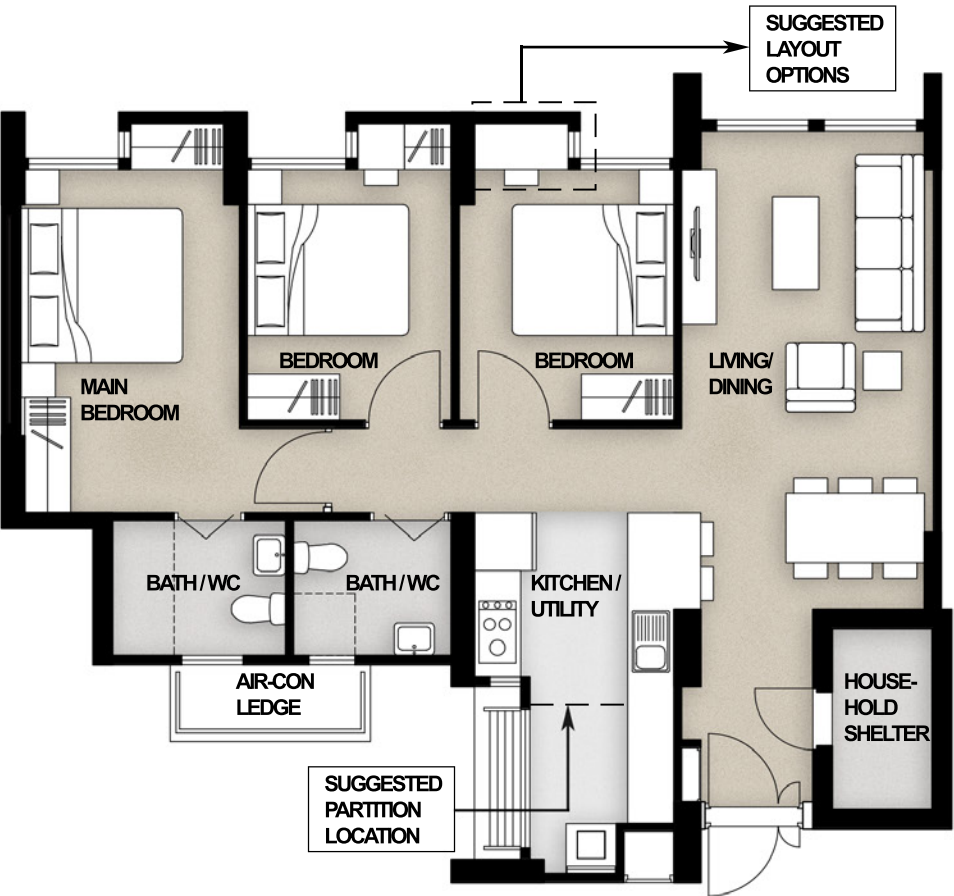
4-ROOM FLOOR PLAN (With Suggested Furniture Layout)

Approx. Floor Area 95sqm

Inclusive of Internal Floor Area of 92sqm and Air-con Ledge

*Approx. floor area for 4-room ranges from 94-95 sqm.

*Internal floor area for 4-room ranges from 91-92 sqm.



To cater to changing lifestyles and provide more flexibility in the use of kitchen space, HDB has designed the 4-room flats with a combined kitchen/utility space.

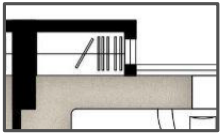
The layout offers homeowners flexibility in configuring the area according to their preferences.

For example, you can add a partition to separate the utility from Kitchen.

The space abutting the windows in the main bedroom and common bedrooms could be designed for built-in wardrobes, storage or as a study area as part of your renovation.

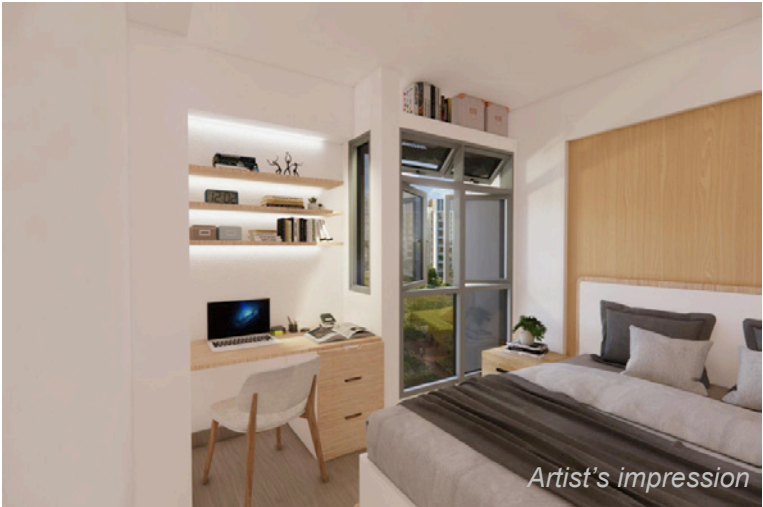
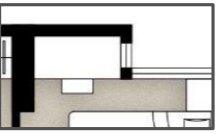
Layout Option A:

Full height wardrobe



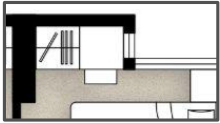
Layout Option B:

Study desk with drawers and overhead shelves



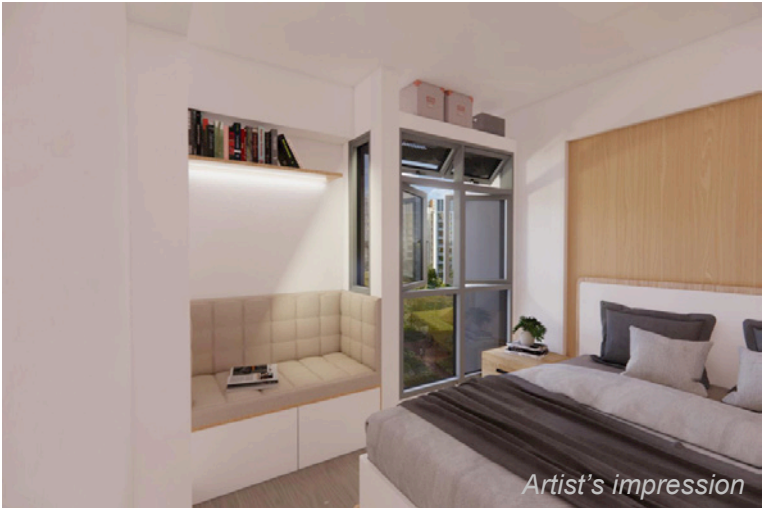
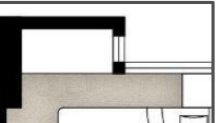
Layout Option C:

Vanity desk with Wardrobe and shelf



Layout Option D:

Reading corner seat with storage



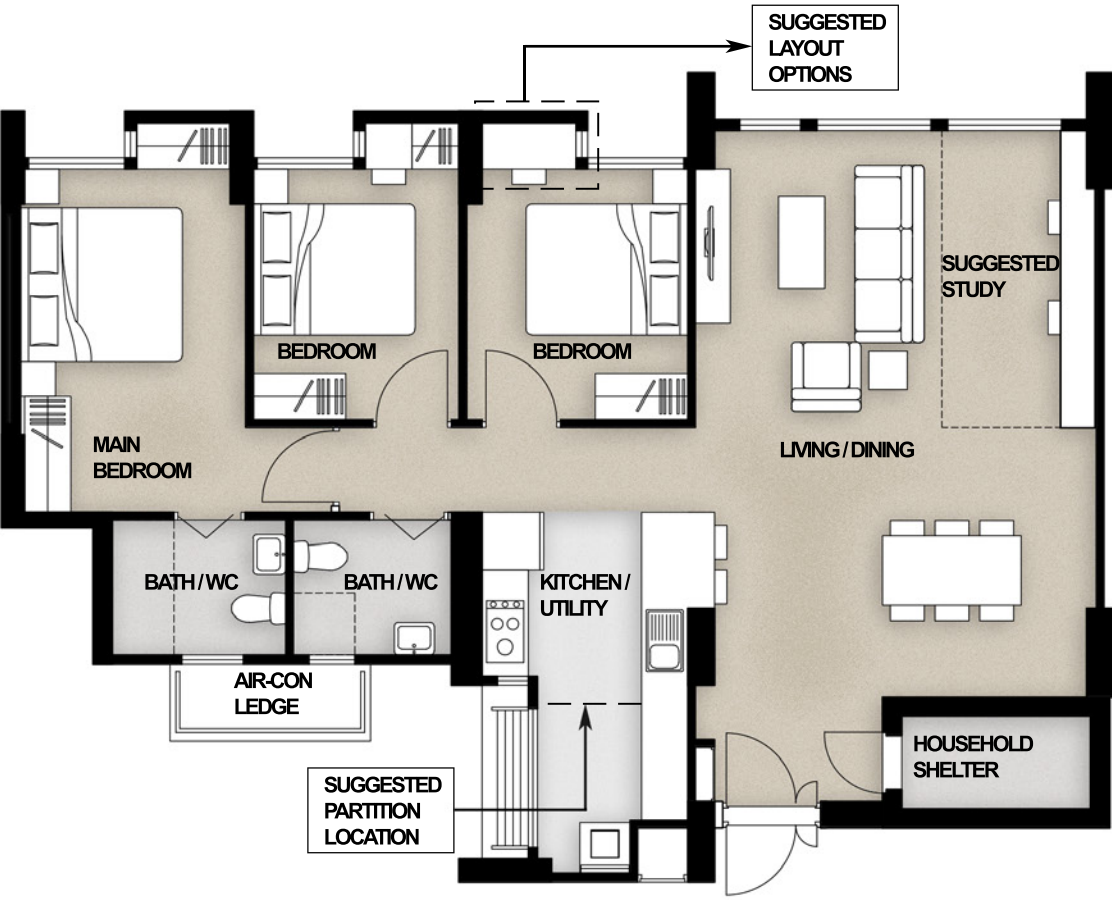
LAYOUT IDEAS

5-ROOM FLOOR PLAN (With Suggested Furniture Layout)

Approx. Floor Area 113sqm

Inclusive of Internal Floor Area of 110sqm and Air-con Ledge

*Approx. floor area for 5-room ranges from 112-113 sqm.



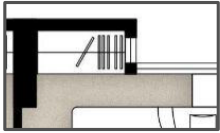
To cater to changing lifestyles and provide more flexibility in the use of kitchen space, HDB has designed the 5-room flats with a combined kitchen/utility space.

The layout offers homeowners flexibility in configuring the area according to their preferences.

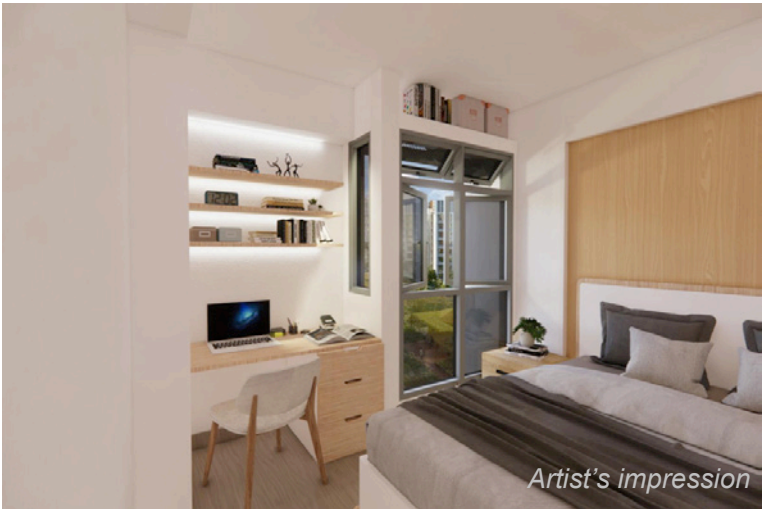
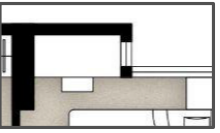
For example, you can add a partition to separate the utility from Kitchen.

The space abutting the windows in the main bedroom and common bedrooms could be designed for built-in wardrobes, storage or as a study area as part of your renovation.

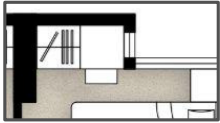
Layout Option A: Full height wardrobe



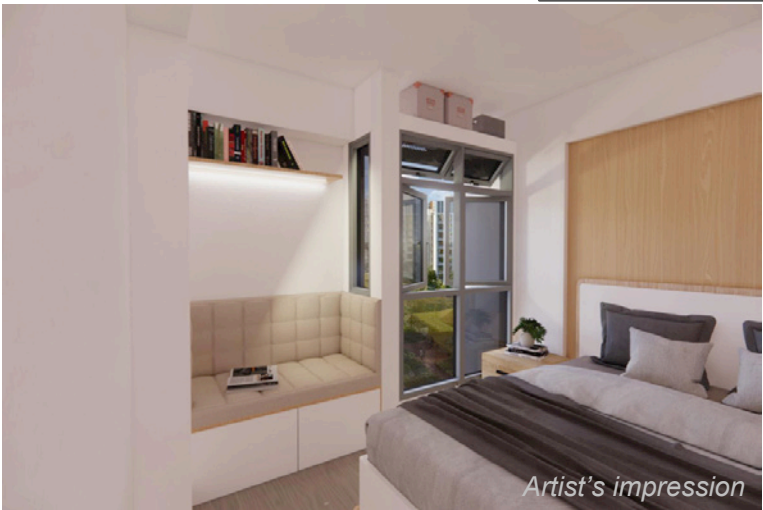
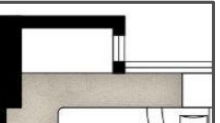
Layout Option B: Study desk with drawers and overhead shelves



Layout Option C: Vanity desk with Wardrobe and shelf

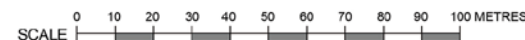


Layout Option D: Reading corner seat with storage





APPLICANTS ARE ENCOURAGED TO VISIT THE PLACE BEFORE BOOKING A FLAT.



SITE PLAN



FLAT TYPE

- 2-ROOM FLEXI (TYPE 1)
- 3-ROOM
- 5-ROOM
- 2-ROOM FLEXI (TYPE 2)
- 4-ROOM
- RENTAL FLATS FROM 3RD TO 6TH STOREY / 2-ROOM FLEXI (TYPE 2) FROM 7TH TO 12TH / 14TH STOREY

PLAY FACILITIES

- 1 CHILDREN PLAYGROUND
- 2 ADULT FITNESS STATION
- 3 ELDERLY FITNESS STATION

COMMUNAL AREAS

- 4 PRECINCT PAVILION AT 1ST STOREY
- 5 DROP-OFF PORCH

SOCIAL AMENITIES

- 6 FUTURE AMENITIES / FACILITIES AT 1ST STOREY
- 7 CHILD CARE CENTRE AT 1ST STOREY

OTHERS

- LINKWAY
LB : LINKBRIDGE
S : SHELTER
- TRELLIS
- SERVICE
- ESS: ELECTRICAL SUB-STATION AT 1ST STOREY
UC: UTILITIES CENTRE AT 1ST STOREY
- SERVICE BAY
- AMENITY LOCATED (BELOW)
- AIR-WELL
- ENTRANCE/EXIT FOR MULTI-STOREY CARPARK
- CENTRALISED REFUSE CHUTE / CHUTE FOR RECYCLEABLE WASTE (PNEUMATIC WASTE CONVEYANCE SYSTEM)

U/C UNDER CONSTRUCTION

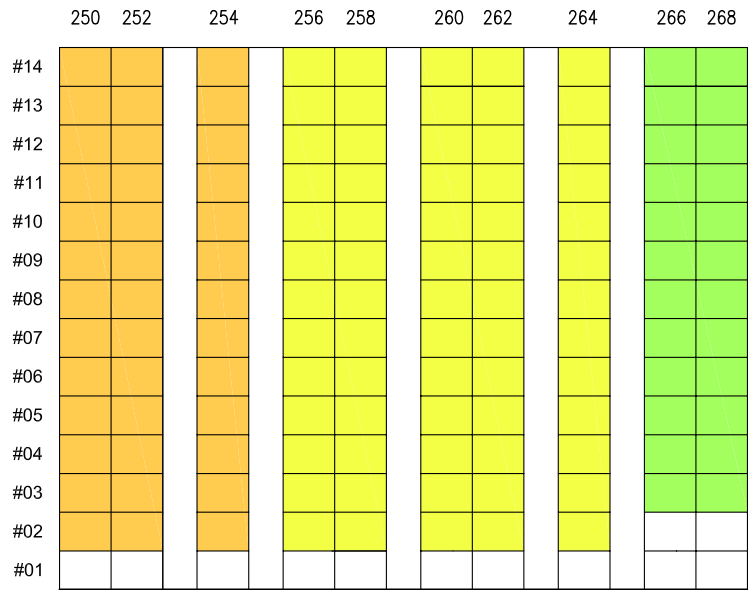
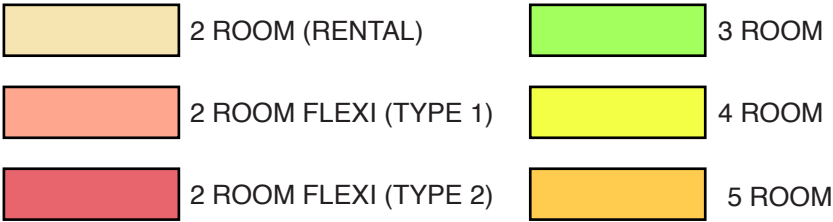
Block Number	Number of Storeys	Rental Flats	Home Ownership Flats					Total
		2-Room	2-Room Flexi		3-Room	4-Room	5-Room	
			Type 1	Type 2				
306A	14	-	-	-	24	65	39	128
306B	8/14	-	-	-	26	25	53	104
306C	8/14	-	26	24	13	39	-	102
307A	9/14	-	-	-	-	52	16	68
307B	14	-	-	-	-	26	75	101
307C	8/12	8	-	37	14	30	-	89
308A	13	-	-	-	-	48	34	82
308B	8/10/12	-	-	-	-	42	43	85
308C	8/14	8	26	16	13	38	-	101
309A	13	-	-	-	-	47	31	78
309B	13	-	-	-	-	34	54	88
309C	8/14	8	-	76	12	26	-	122
Total		24	52	153	102	472	345	1148

Notes:

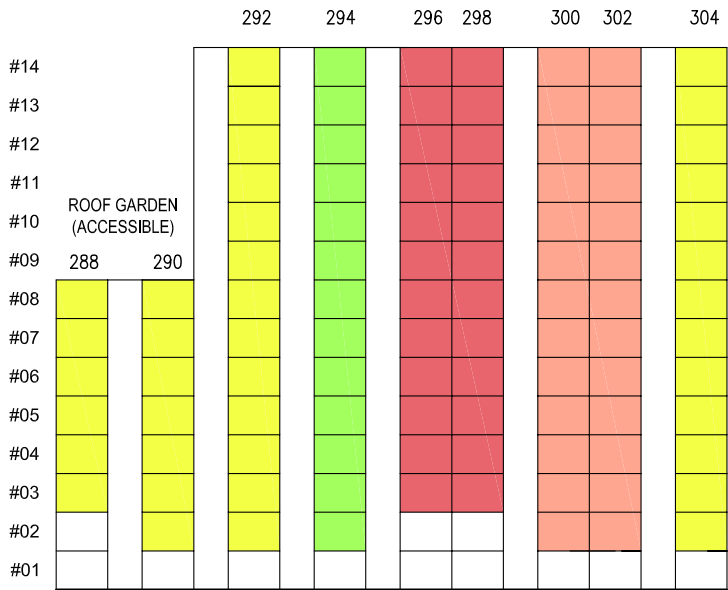
- All proposed developments and facilities as well as their locations shown are indicative only and are subject to change and planning approval. The implementation of such proposed developments and facilities is subject to review from time to time by the relevant authorities.
- The developments and facilities shown (whether existing or proposed) may include other ancillary uses allowed under URA's prevailing Development Control guidelines. For example, places of worship and funeral parlours may include columbarium, community centres may include childcare centres, and schools may be upgraded or built with higher-rise blocks.
- The use of the void deck in any apartment block, common property (such as precinct pavilion), car park or stand-alone community building for future amenities/facilities (such as childcare centres, elderly-related facilities, education centres, residents' network centres and day activity centres), commercial facilities (such as shops and eating houses), mechanical and electrical rooms and such other facilities, is subject to review from time to time.
- The residential blocks may be completed ahead of the proposed precinct facilities, so that flat buyers are able to collect the keys to their new homes earlier.
- Unless otherwise indicated in the sales brochure, all facilities within the project, including but not limited to roof gardens and sky terraces (if any), will be open to the public.
- In view of the COVID-19 situation, temporary COVID-19 related facilities may be set up near residential areas by the relevant authorities.

The information contained herein is subject to change at any time without notice and cannot form part of an offer or contract. While reasonable care has been taken in providing this information, HDB shall not be responsible in any way for any damage or loss suffered by any person whether directly or indirectly as a result of reliance on the said information or as a result of any error or omission therein.

UNIT DISTRIBUTION



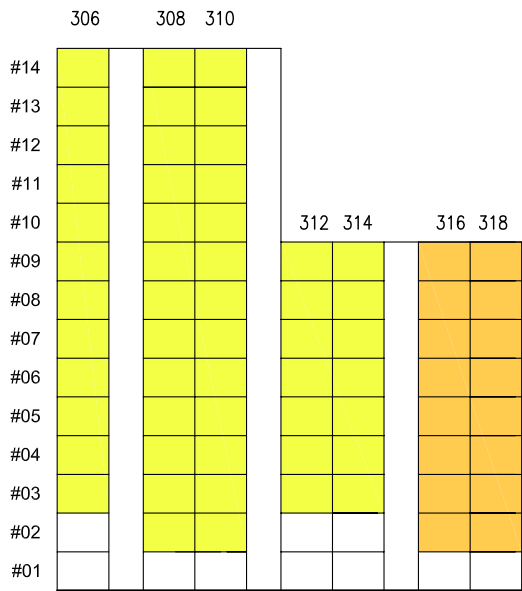
BLOCK 306A



BLOCK 306C

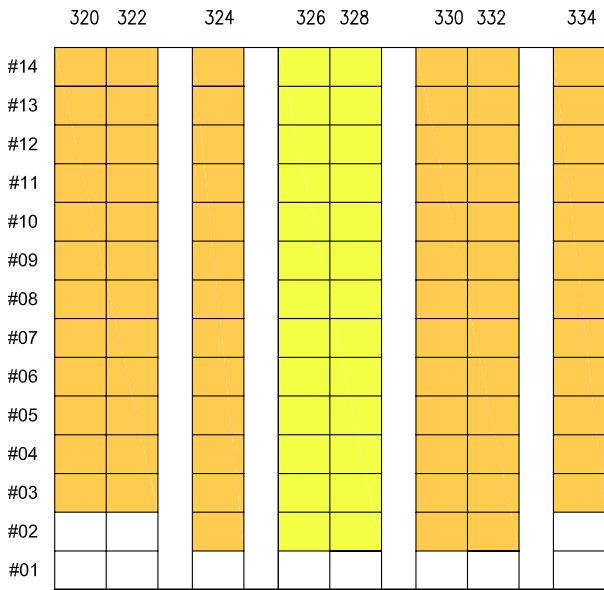
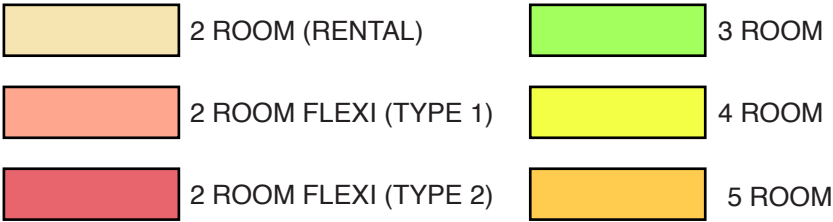


BLOCK 306B

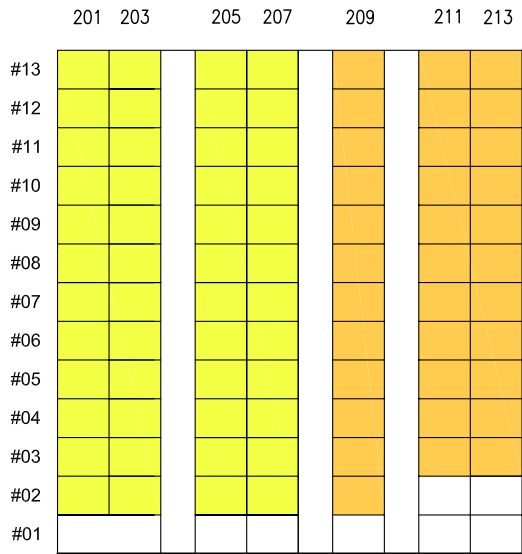


BLOCK 307A

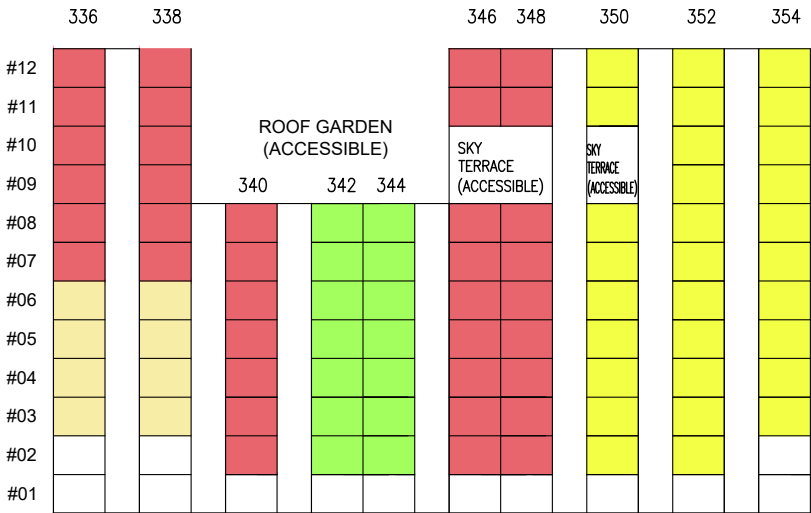
UNIT DISTRIBUTION



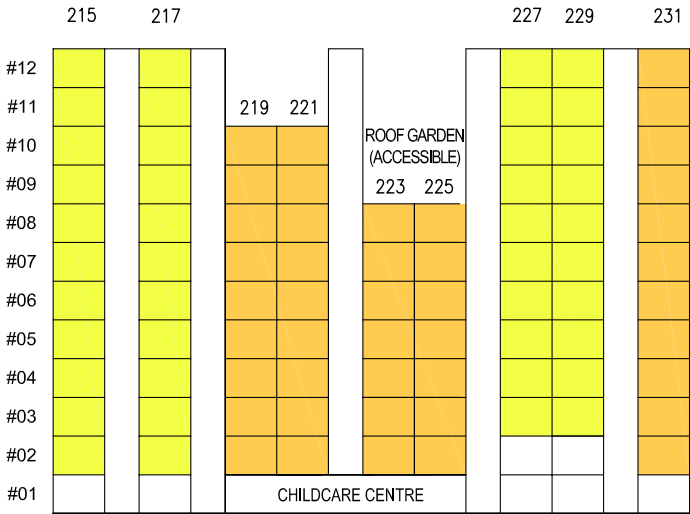
BLOCK 307B



BLOCK 308A

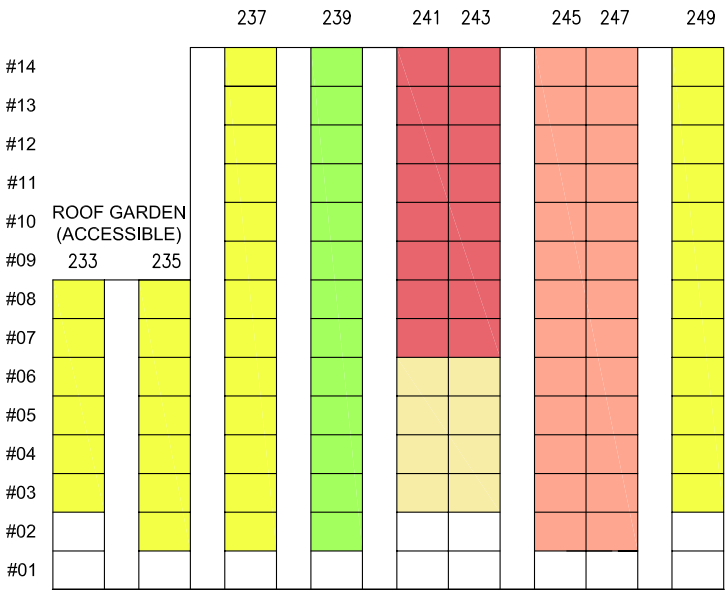
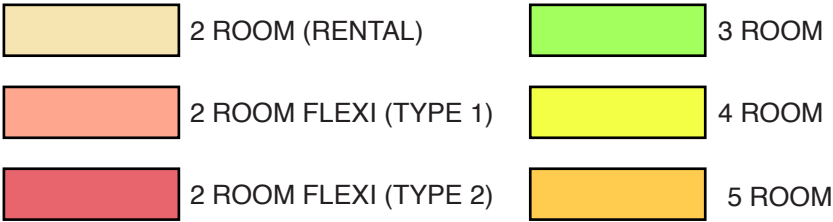


BLOCK 307C

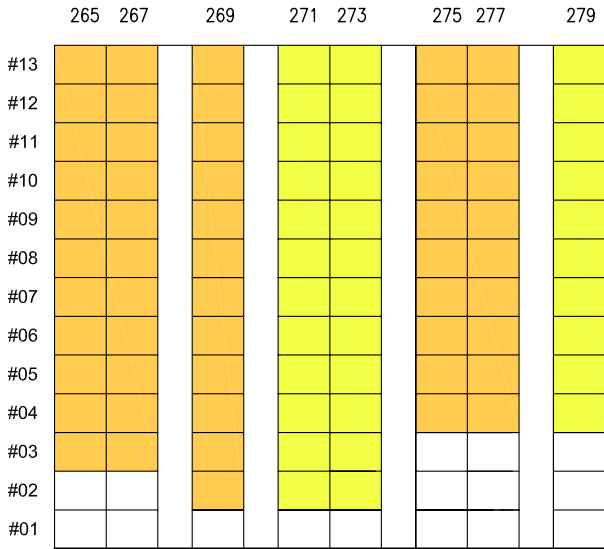


BLOCK 308B

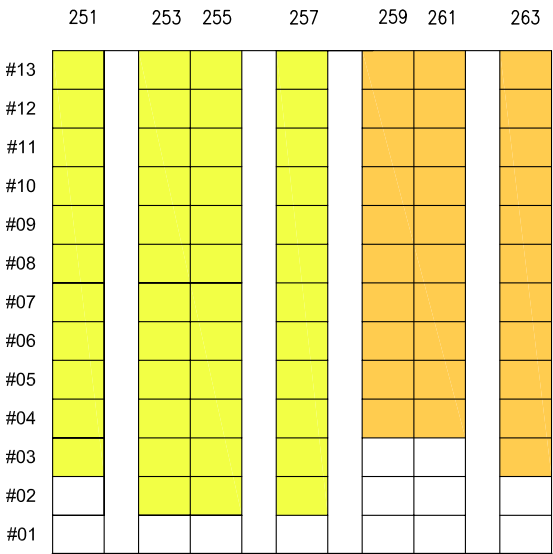
UNIT DISTRIBUTION



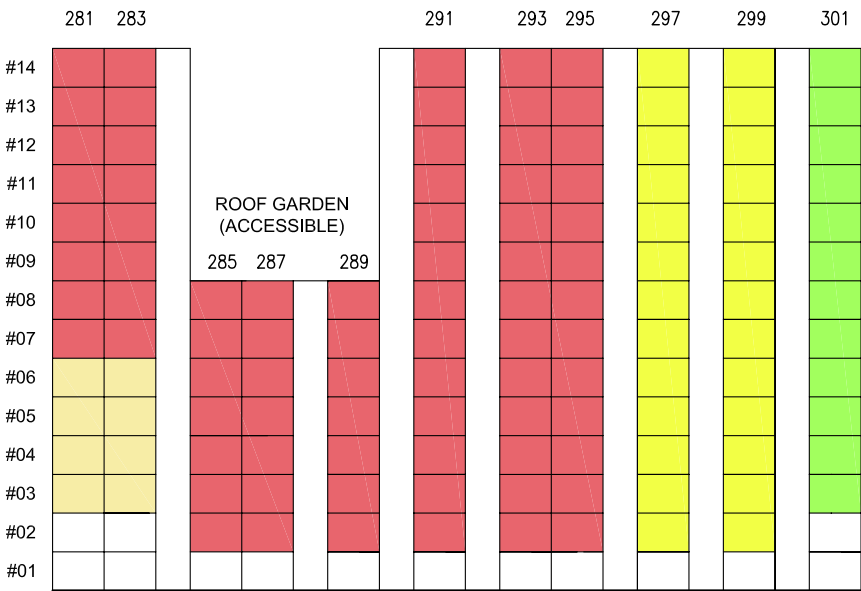
BLOCK 308C



BLOCK 309B



BLOCK 309A



BLOCK 309C



BLOCK 306A | 2ND STOREY FLOOR PLAN

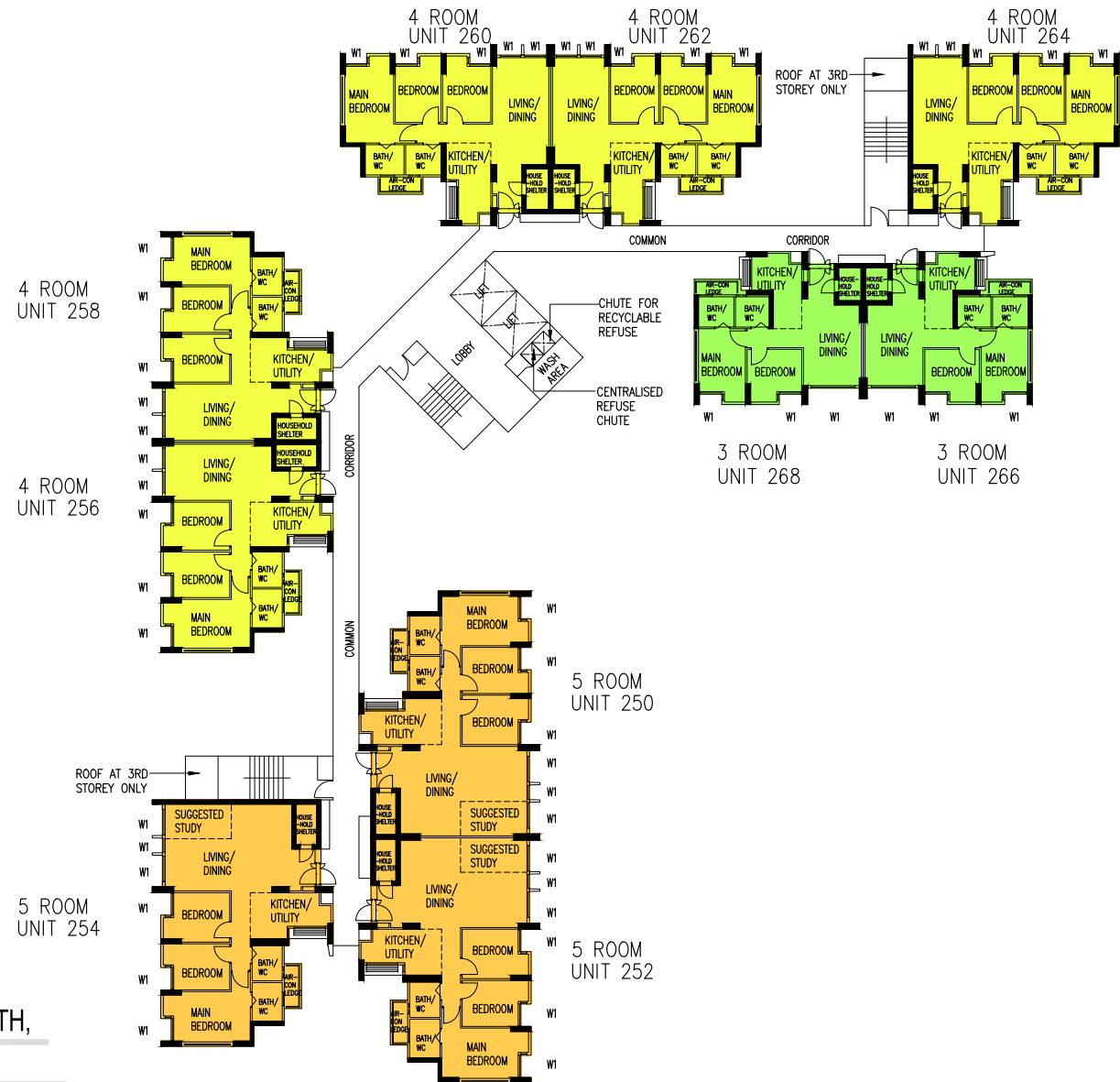
WINDOW LEGEND:

W1 FULL HEIGHT WINDOW (APPROX. 300mm HIGH PARAPET WALL)

UNLESS OTHERWISE INDICATED,
ALL WINDOWS WILL BE STANDARD HEIGHT WINDOWS

SCALE 0 2 4 6 8 10 METRES

THE COLOURED FLOOR PLAN IS NOT INTENDED
TO DEMARCATTE THE BOUNDARY OF THE FLAT



BLOCK 306A | 3TH, 5TH, 6TH, 9TH, 10TH, 13TH & 14TH STOREY FLOOR PLAN

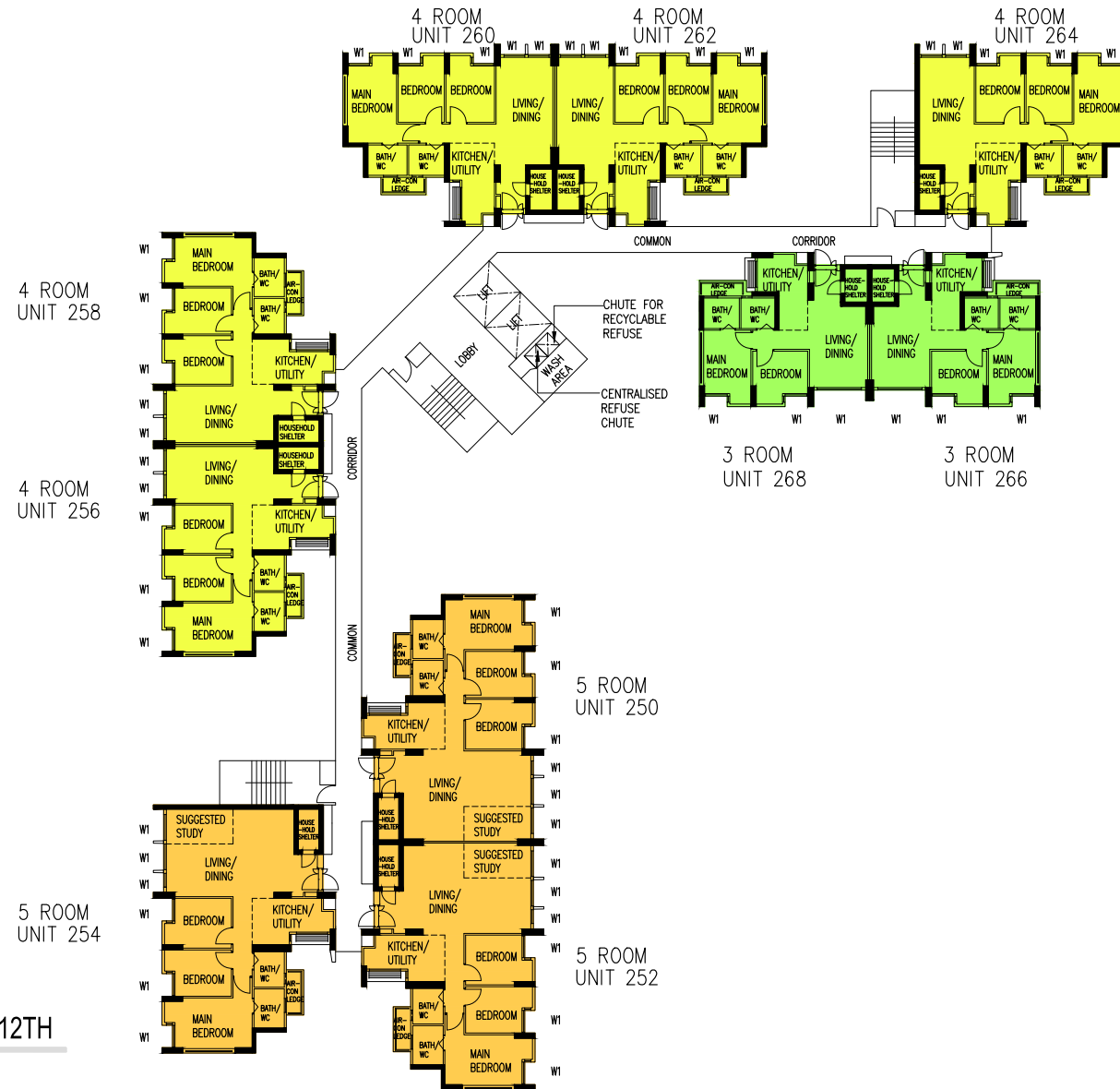
WINDOW LEGEND:

W1 FULL HEIGHT WINDOW (APPROX. 300mm HIGH PARAPET WALL)

UNLESS OTHERWISE INDICATED,
ALL WINDOWS WILL BE STANDARD HEIGHT WINDOWS

SCALE 0 2 4 6 8 10 METRES

THE COLOURED FLOOR PLAN IS NOT INTENDED
TO DEMARCATATE THE BOUNDARY OF THE FLAT



BLOCK 306A | 4TH, 7TH, 8TH, 11TH & 12TH STOREY FLOOR PLAN

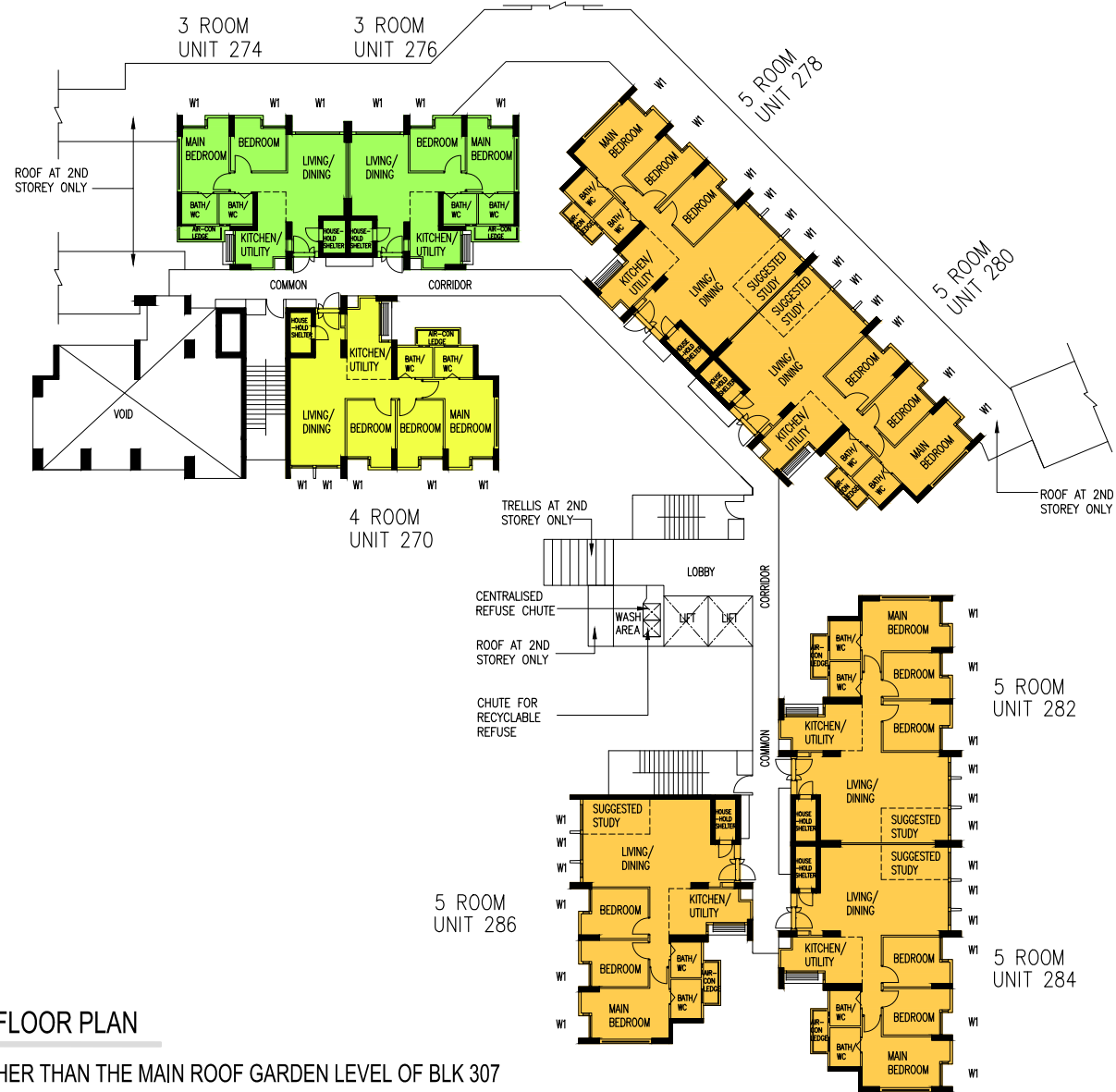
WINDOW LEGEND:

W1 FULL HEIGHT WINDOW (APPROX. 300mm HIGH PARAPET WALL)

UNLESS OTHERWISE INDICATED,
ALL WINDOWS WILL BE STANDARD HEIGHT WINDOWS

SCALE 0 2 4 6 8 10 METRES

THE COLOURED FLOOR PLAN IS NOT INTENDED
TO DEMARCATTE THE BOUNDARY OF THE FLAT



BLOCK 306B | 2ND STOREY FLOOR PLAN

UNITS AT AND ABOVE 11TH STOREY ARE HIGHER THAN THE MAIN ROOF GARDEN LEVEL OF BLK 307

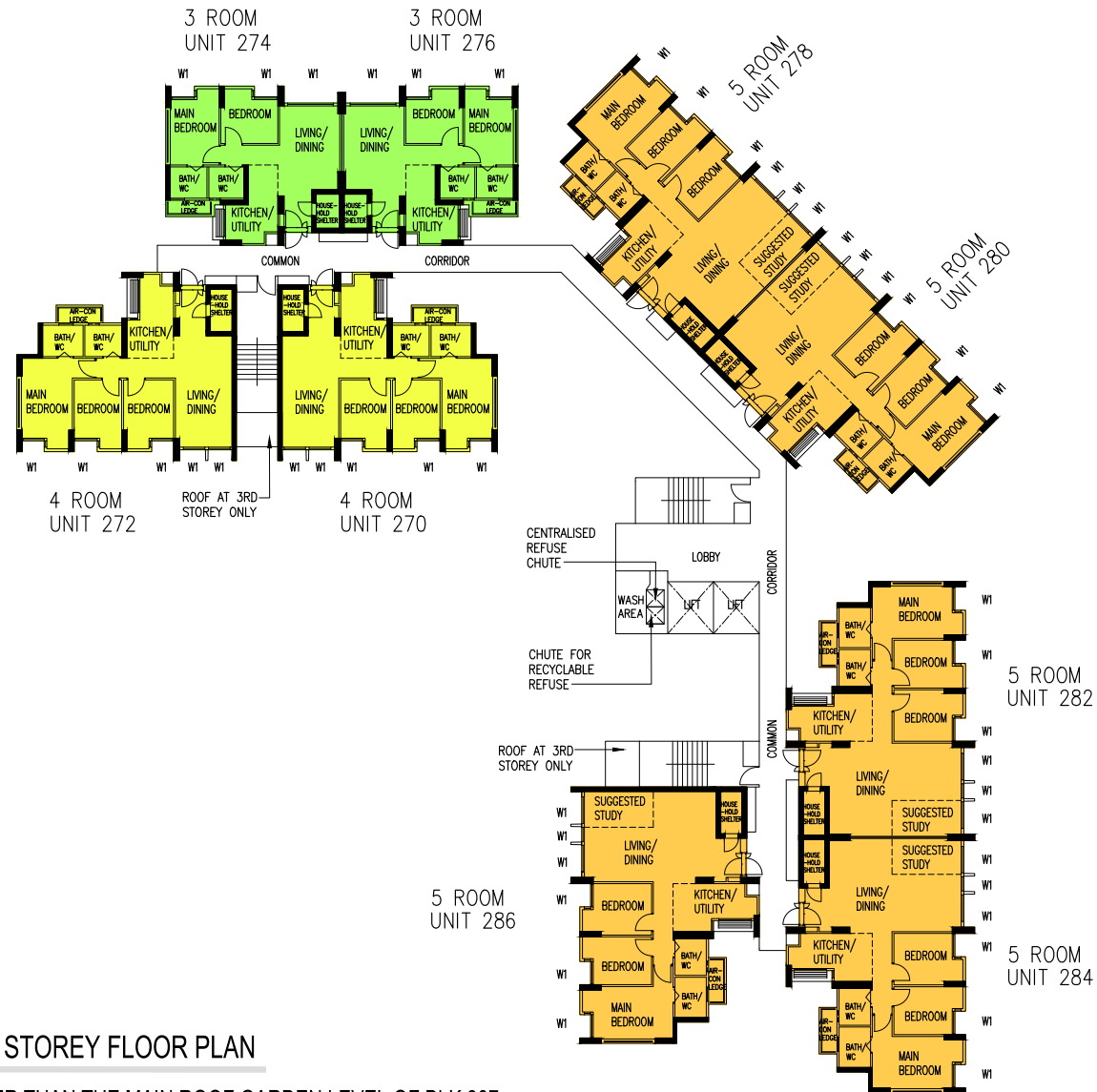
WINDOW LEGEND:

W1 FULL HEIGHT WINDOW (APPROX. 300mm HIGH PARAPET WALL)

UNLESS OTHERWISE INDICATED,
ALL WINDOWS WILL BE STANDARD HEIGHT WINDOWS

SCALE 0 2 4 6 8 10 METRES

THE COLOURED FLOOR PLAN IS NOT INTENDED
TO DEMARCATATE THE BOUNDARY OF THE FLAT



BLOCK 306B | 3RD, 5TH & 6TH STOREY FLOOR PLAN

UNITS AT AND ABOVE 11TH STOREY ARE HIGHER THAN THE MAIN ROOF GARDEN LEVEL OF BLK 307

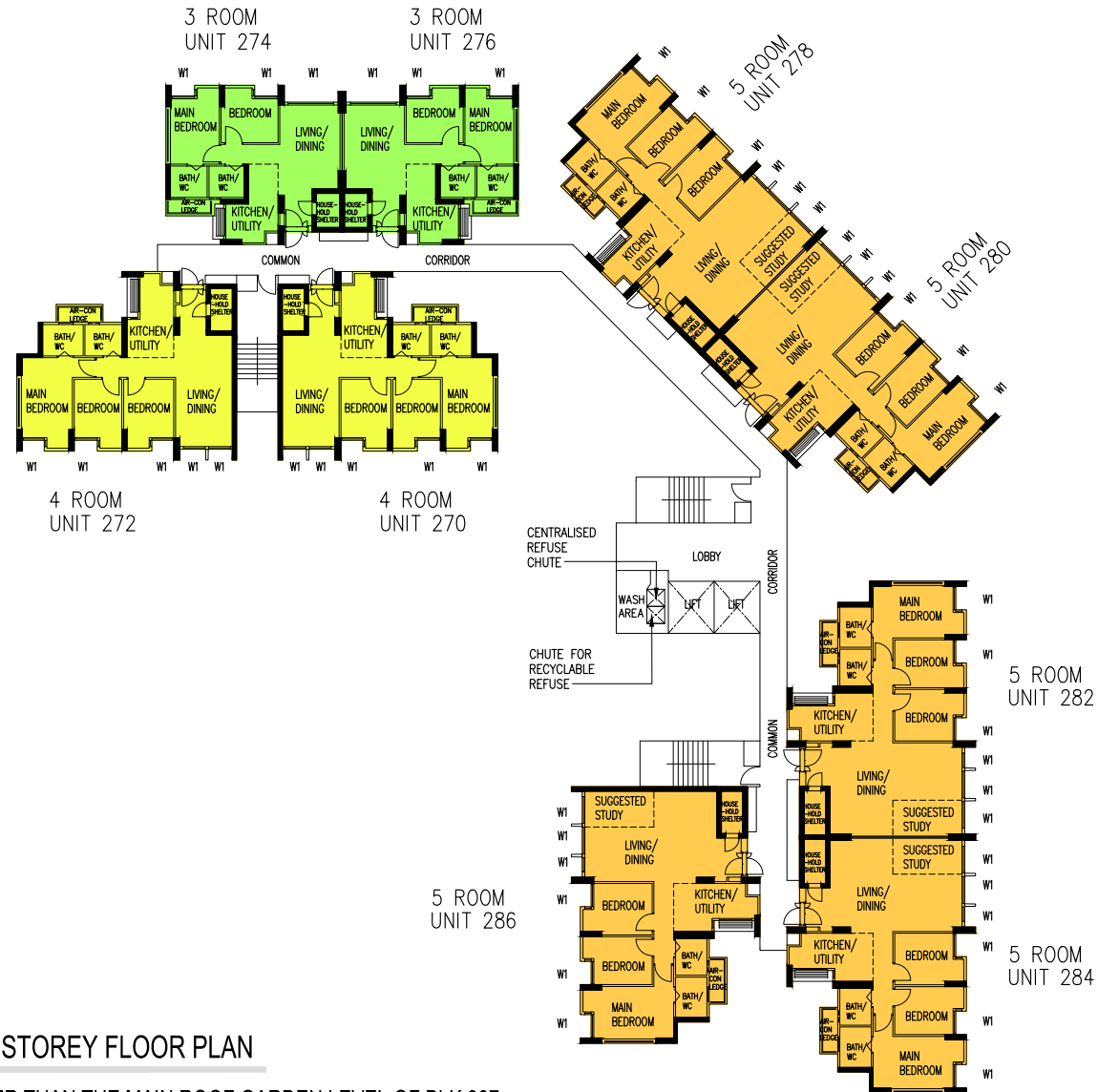
WINDOW LEGEND:

W1 FULL HEIGHT WINDOW (APPROX. 300mm HIGH PARAPET WALL)

UNLESS OTHERWISE INDICATED,
ALL WINDOWS WILL BE STANDARD HEIGHT WINDOWS

SCALE 0 2 4 6 8 10 METRES

THE COLOURED FLOOR PLAN IS NOT INTENDED
TO DEMARCATTE THE BOUNDARY OF THE FLAT



BLOCK 306B | 4TH, 7TH & 8TH STOREY FLOOR PLAN

UNITS AT AND ABOVE 11TH STOREY ARE HIGHER THAN THE MAIN ROOF GARDEN LEVEL OF BLK 307

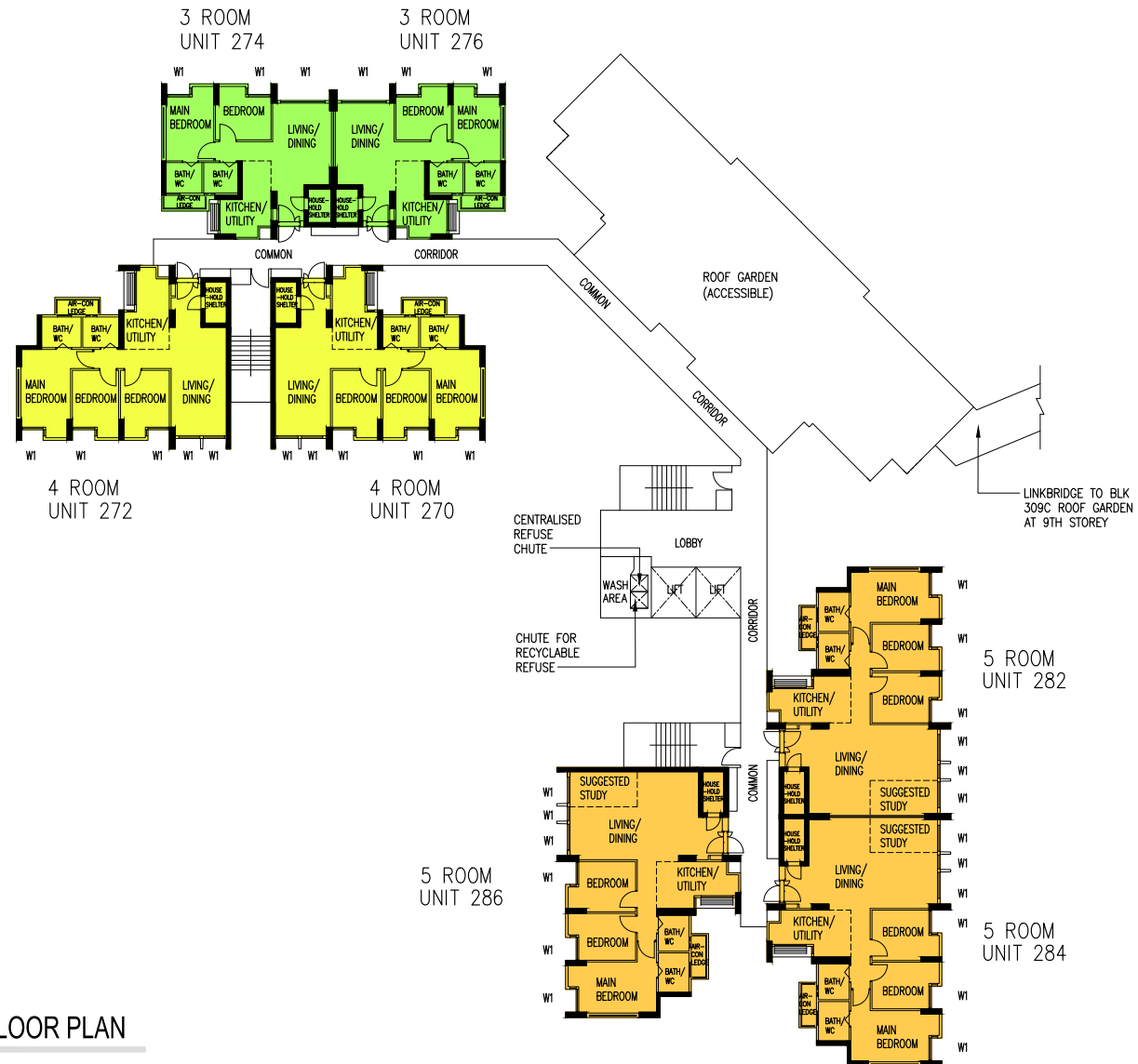
WINDOW LEGEND:

W1 FULL HEIGHT WINDOW (APPROX. 300mm HIGH PARAPET WALL)

UNLESS OTHERWISE INDICATED,
ALL WINDOWS WILL BE STANDARD HEIGHT WINDOWS

SCALE 0 2 4 6 8 10 METRES

THE COLOURED FLOOR PLAN IS NOT INTENDED
TO DEMARCATATE THE BOUNDARY OF THE FLAT



BLOCK 306B | 9TH STOREY FLOOR PLAN

UNITS AT AND ABOVE 11TH STOREY ARE HIGHER THAN THE MAIN ROOF GARDEN LEVEL OF BLK 307

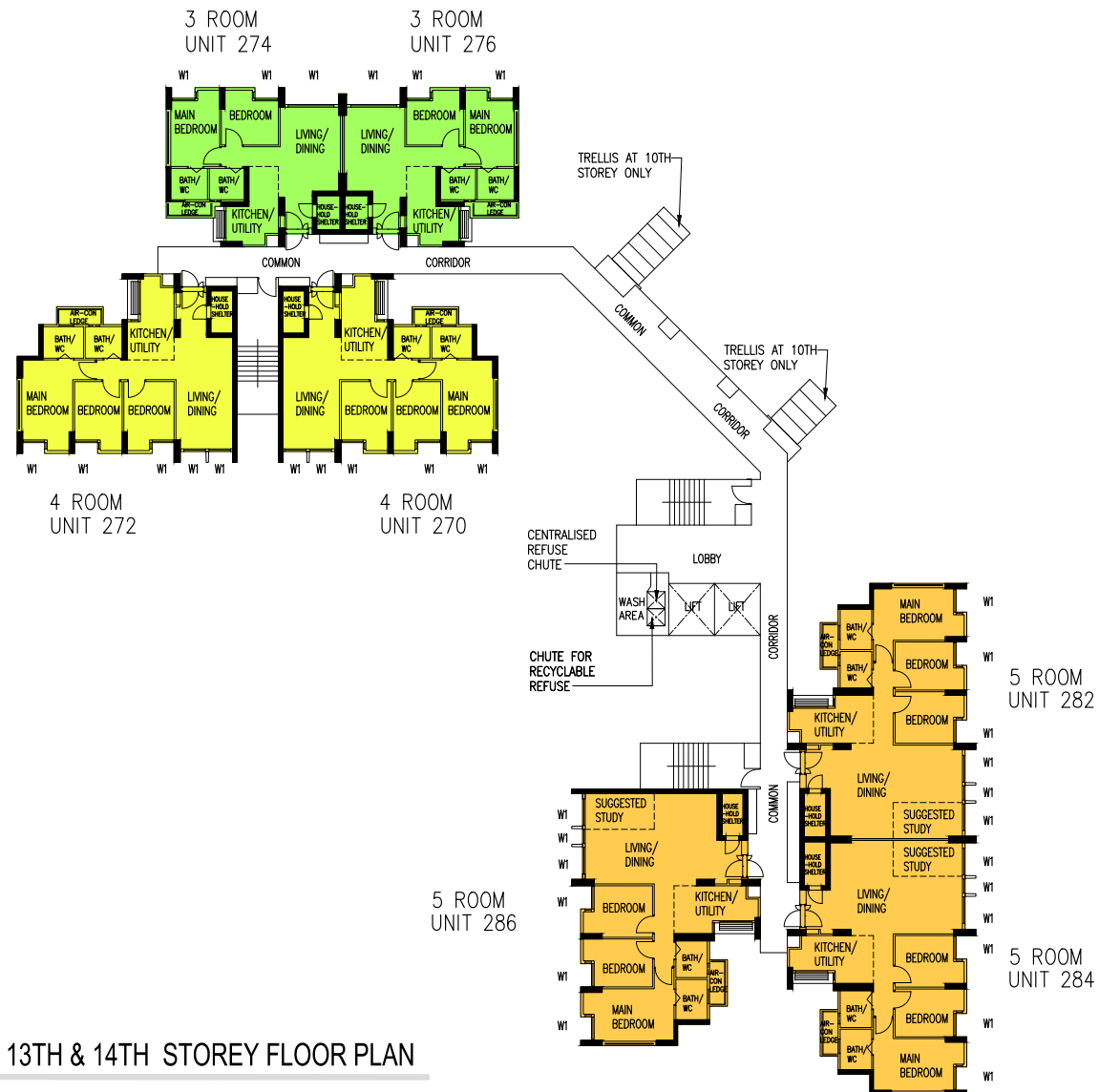
WINDOW LEGEND:

W1 FULL HEIGHT WINDOW (APPROX. 300mm HIGH PARAPET WALL)

UNLESS OTHERWISE INDICATED,
ALL WINDOWS WILL BE STANDARD HEIGHT WINDOWS

SCALE 0 2 4 6 8 10 METRES

THE COLOURED FLOOR PLAN IS NOT INTENDED
TO DEMARCATATE THE BOUNDARY OF THE FLAT



BLOCK 306B | 10TH, 13TH & 14TH STOREY FLOOR PLAN

UNITS AT AND ABOVE 11TH STOREY ARE HIGHER THAN THE MAIN ROOF GARDEN LEVEL OF BLK 307

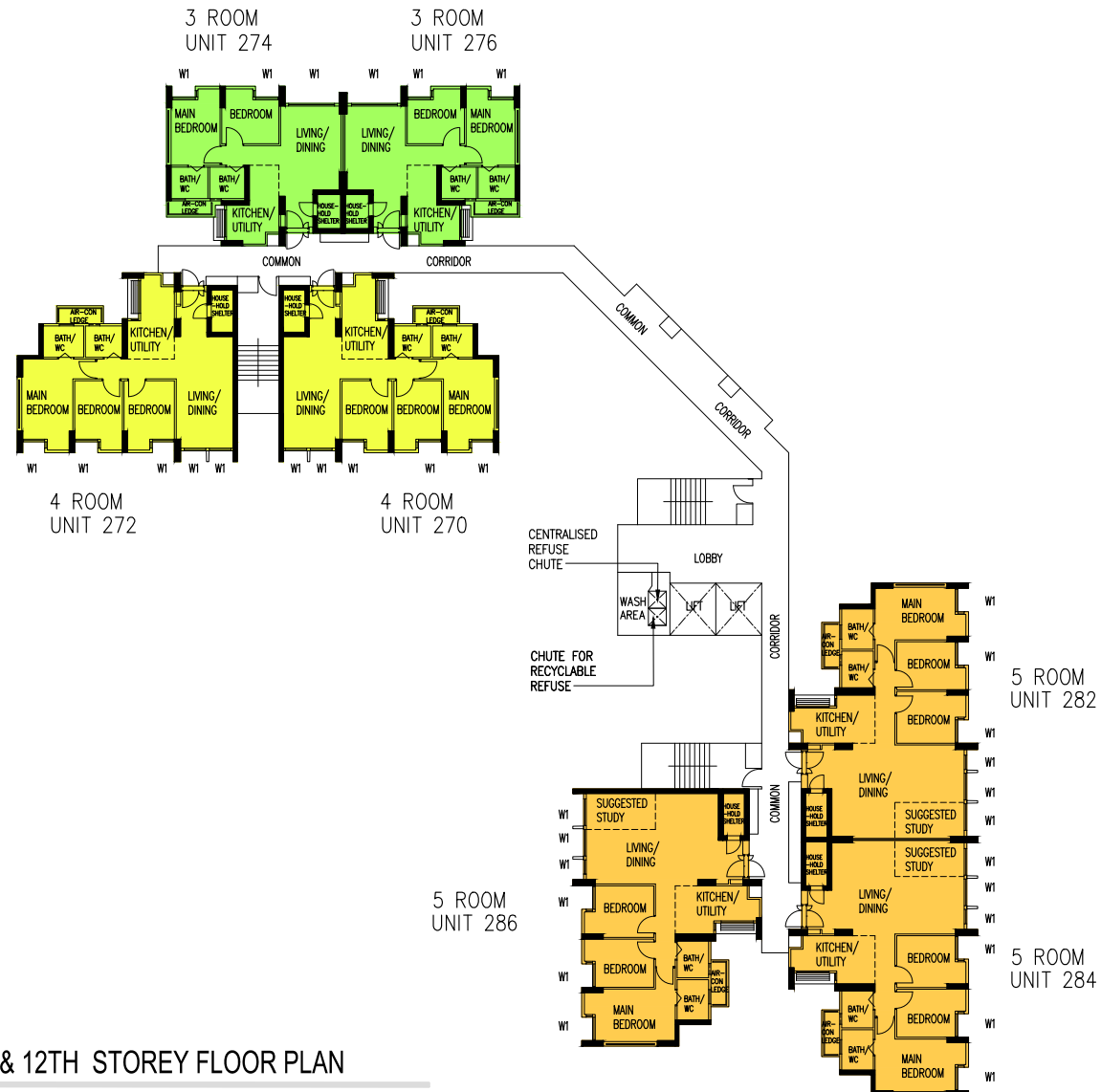
WINDOW LEGEND:

W1 FULL HEIGHT WINDOW (APPROX. 300mm HIGH PARAPET WALL)

UNLESS OTHERWISE INDICATED,
ALL WINDOWS WILL BE STANDARD HEIGHT WINDOWS

SCALE 0 2 4 6 8 10 METRES

THE COLOURED FLOOR PLAN IS NOT INTENDED
TO DEMARCATTE THE BOUNDARY OF THE FLAT



BLOCK 306B | 11TH & 12TH STOREY FLOOR PLAN

UNITS AT AND ABOVE 11TH STOREY ARE HIGHER THAN THE MAIN ROOF GARDEN LEVEL OF BLK 307

WINDOW LEGEND:

W1 FULL HEIGHT WINDOW (APPROX. 300mm HIGH PARAPET WALL)

UNLESS OTHERWISE INDICATED,
ALL WINDOWS WILL BE STANDARD HEIGHT WINDOWS

SCALE 0 2 4 6 8 10 METRES

THE COLOURED FLOOR PLAN IS NOT INTENDED
TO DEMARCATTE THE BOUNDARY OF THE FLAT



BLOCK 306C | 2ND STOREY FLOOR PLAN

UNITS AT AND ABOVE 9TH STOREY ARE HIGHER THAN THE MAIN ROOF GARDEN LEVEL OF BLOCK 307

WINDOW LEGEND:

W1 FULL HEIGHT WINDOW (APPROX. 300mm HIGH PARAPET WALL)

UNLESS OTHERWISE INDICATED,
ALL WINDOWS WILL BE STANDARD HEIGHT WINDOWS

SCALE 0 2 4 6 8 10 METRES

THE COLOURED FLOOR PLAN IS NOT INTENDED
TO DEMARCATATE THE BOUNDARY OF THE FLAT



BLOCK 306C | 3RD TO 8TH STOREY FLOOR PLAN

UNITS AT AND ABOVE 9TH STOREY ARE HIGHER THAN THE MAIN ROOF GARDEN LEVEL OF BLOCK 307

WINDOW LEGEND:

W1 FULL HEIGHT WINDOW (APPROX. 300mm HIGH PARAPET WALL)

UNLESS OTHERWISE INDICATED,
ALL WINDOWS WILL BE STANDARD HEIGHT WINDOWS

SCALE 0 2 4 6 8 10 METRES

THE COLOURED FLOOR PLAN IS NOT INTENDED
TO DEMARCATTE THE BOUNDARY OF THE FLAT



BLOCK 306C | 9TH STOREY FLOOR PLAN

UNITS AT AND ABOVE 9TH STOREY ARE HIGHER THAN THE MAIN ROOF GARDEN LEVEL OF BLOCK 307

WINDOW LEGEND:

W1 FULL HEIGHT WINDOW (APPROX. 300mm HIGH PARAPET WALL)

UNLESS OTHERWISE INDICATED,
ALL WINDOWS WILL BE STANDARD HEIGHT WINDOWS

SCALE 0 2 4 6 8 10 METRES

THE COLOURED FLOOR PLAN IS NOT INTENDED
TO DEMARCATATE THE BOUNDARY OF THE FLAT



BLOCK 306C | 10TH TO 14 STOREY FLOOR PLAN

UNITS AT AND ABOVE 9TH STOREY ARE HIGHER THAN THE MAIN ROOF GARDEN LEVEL OF BLOCK 307

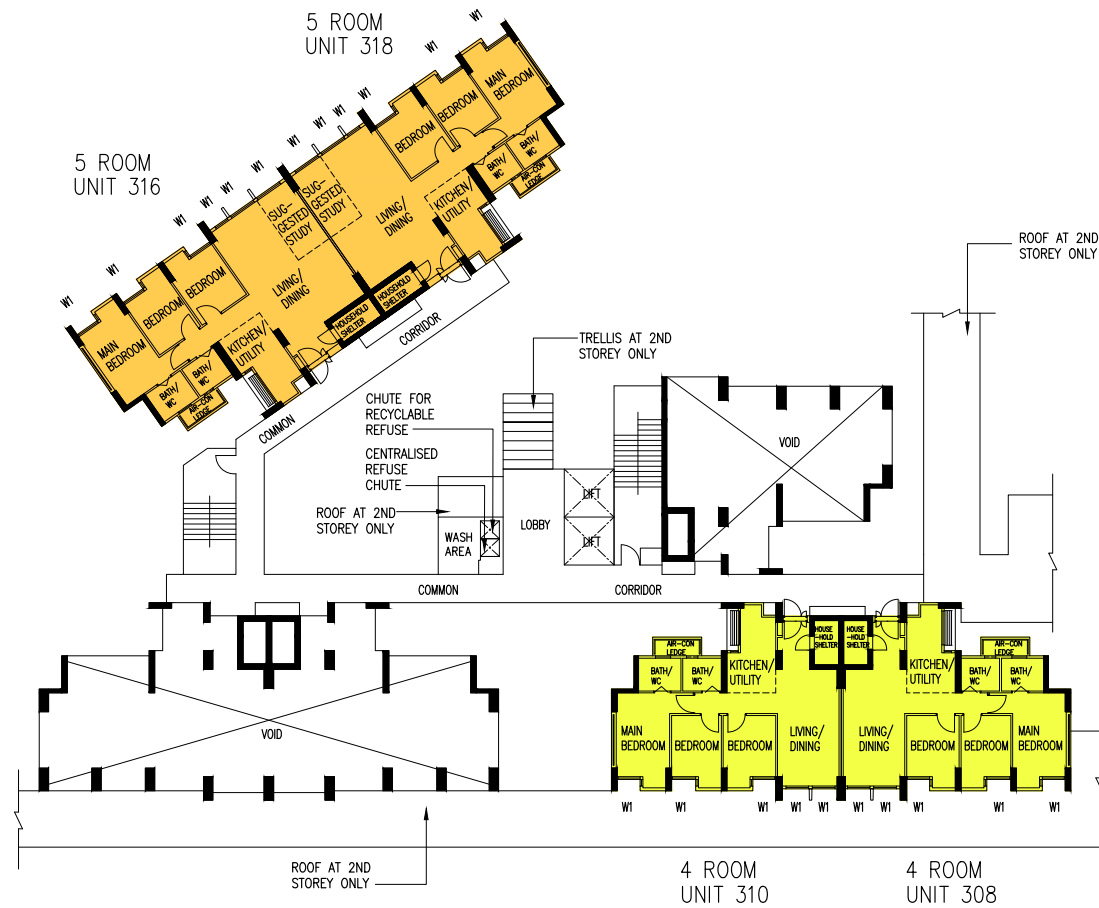
WINDOW LEGEND:

W1 FULL HEIGHT WINDOW (APPROX. 300mm HIGH PARAPET WALL)

UNLESS OTHERWISE INDICATED,
ALL WINDOWS WILL BE STANDARD HEIGHT WINDOWS

SCALE 0 2 4 6 8 10 METRES

THE COLOURED FLOOR PLAN IS NOT INTENDED
TO DEMARCAT THE BOUNDARY OF THE FLAT



BLOCK 307A | 2ND STOREY FLOOR PLAN

WINDOW LEGEND:

W1 FULL HEIGHT WINDOW (APPROX. 300mm HIGH PARAPET WALL)

UNLESS OTHERWISE INDICATED,
ALL WINDOWS WILL BE STANDARD HEIGHT WINDOWS

SCALE 0 2 4 6 8 10 METRES

THE COLOURED FLOOR PLAN IS NOT INTENDED
TO DEMARCATTE THE BOUNDARY OF THE FLAT



BLOCK 307A | 4TH, 6TH & 7TH STOREY FLOOR PLAN

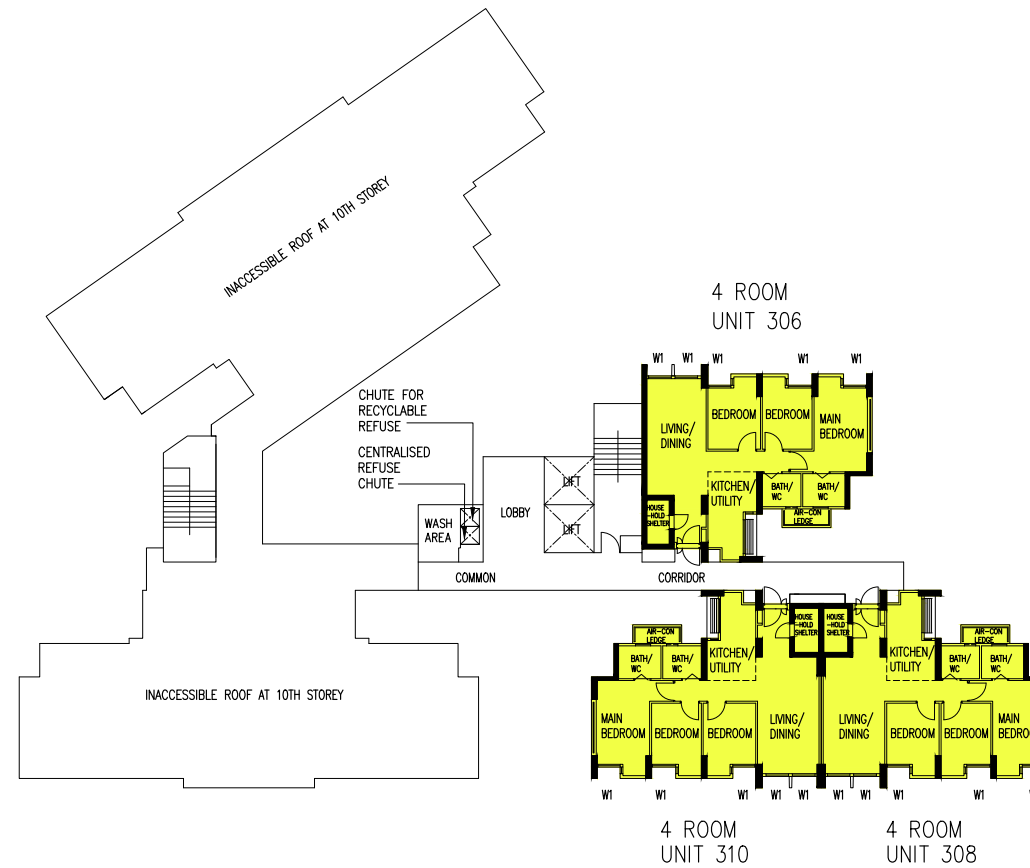
WINDOW LEGEND:

W1 FULL HEIGHT WINDOW (APPROX. 300mm HIGH PARAPET WALL)

UNLESS OTHERWISE INDICATED,
ALL WINDOWS WILL BE STANDARD HEIGHT WINDOWS

SCALE 0 2 4 6 8 10 METRES

THE COLOURED FLOOR PLAN IS NOT INTENDED
TO DEMARCATTE THE BOUNDARY OF THE FLAT



BLOCK 307A | 10TH STOREY FLOOR PLAN

WINDOW LEGEND:

W1 FULL HEIGHT WINDOW (APPROX. 300mm HIGH PARAPET WALL)

UNLESS OTHERWISE INDICATED,
ALL WINDOWS WILL BE STANDARD HEIGHT WINDOWS

SCALE 0 2 4 6 8 10 METRES

THE COLOURED FLOOR PLAN IS NOT INTENDED
TO DEMARCATATE THE BOUNDARY OF THE FLAT



THE COLOURED FLOOR PLAN IS NOT INTENDED
TO DEMARCATTE THE BOUNDARY OF THE FLAT



BLOCK 307B | 2ND STOREY FLOOR PLAN

WINDOW LEGEND:

W1 FULL HEIGHT WINDOW (APPROX. 300mm HIGH PARAPET WALL)

UNLESS OTHERWISE INDICATED,
ALL WINDOWS WILL BE STANDARD HEIGHT WINDOWS

SCALE 0 2 4 6 8 10 METRES

THE COLOURED FLOOR PLAN IS NOT INTENDED
TO DEMARCATATE THE BOUNDARY OF THE FLAT



BLOCK 307B | 3RD, 5TH, 6TH, 9TH, 10TH, 13TH & 14TH STOREY FLOOR PLAN

WINDOW LEGEND:

W1 FULL HEIGHT WINDOW (APPROX. 300mm HIGH PARAPET WALL)

UNLESS OTHERWISE INDICATED,
ALL WINDOWS WILL BE STANDARD HEIGHT WINDOWS

SCALE 0 2 4 6 8 10 METRES

THE COLOURED FLOOR PLAN IS NOT INTENDED
TO DEMARCATATE THE BOUNDARY OF THE FLAT



BLOCK 307B | 4TH, 7TH, 8TH, 11TH & 12TH STOREY FLOOR PLAN

WINDOW LEGEND:

W1 FULL HEIGHT WINDOW (APPROX. 300mm HIGH PARAPET WALL)

UNLESS OTHERWISE INDICATED,
ALL WINDOWS WILL BE STANDARD HEIGHT WINDOWS

SCALE 0 2 4 6 8 10 METRES

THE COLOURED FLOOR PLAN IS NOT INTENDED
TO DEMARCATTE THE BOUNDARY OF THE FLAT



BLOCK 307C | 2ND STOREY FLOOR PLAN

UNITS AT 12TH STOREY ARE HIGHER THAN THE MAIN ROOF GARDEN LEVEL OF BLK 307

WINDOW LEGEND:

W1 FULL HEIGHT WINDOW (APPROX. 300mm HIGH PARAPET WALL)

UNLESS OTHERWISE INDICATED,
ALL WINDOWS WILL BE STANDARD HEIGHT WINDOWS

SCALE 0 2 4 6 8 10 METRES

THE COLOURED FLOOR PLAN IS NOT INTENDED
TO DEMARCATTE THE BOUNDARY OF THE FLAT



BLOCK 307C | 7TH & 8TH STOREY FLOOR PLAN

UNITS AT 12TH STOREY ARE HIGHER THAN THE MAIN ROOF GARDEN LEVEL OF BLK 307

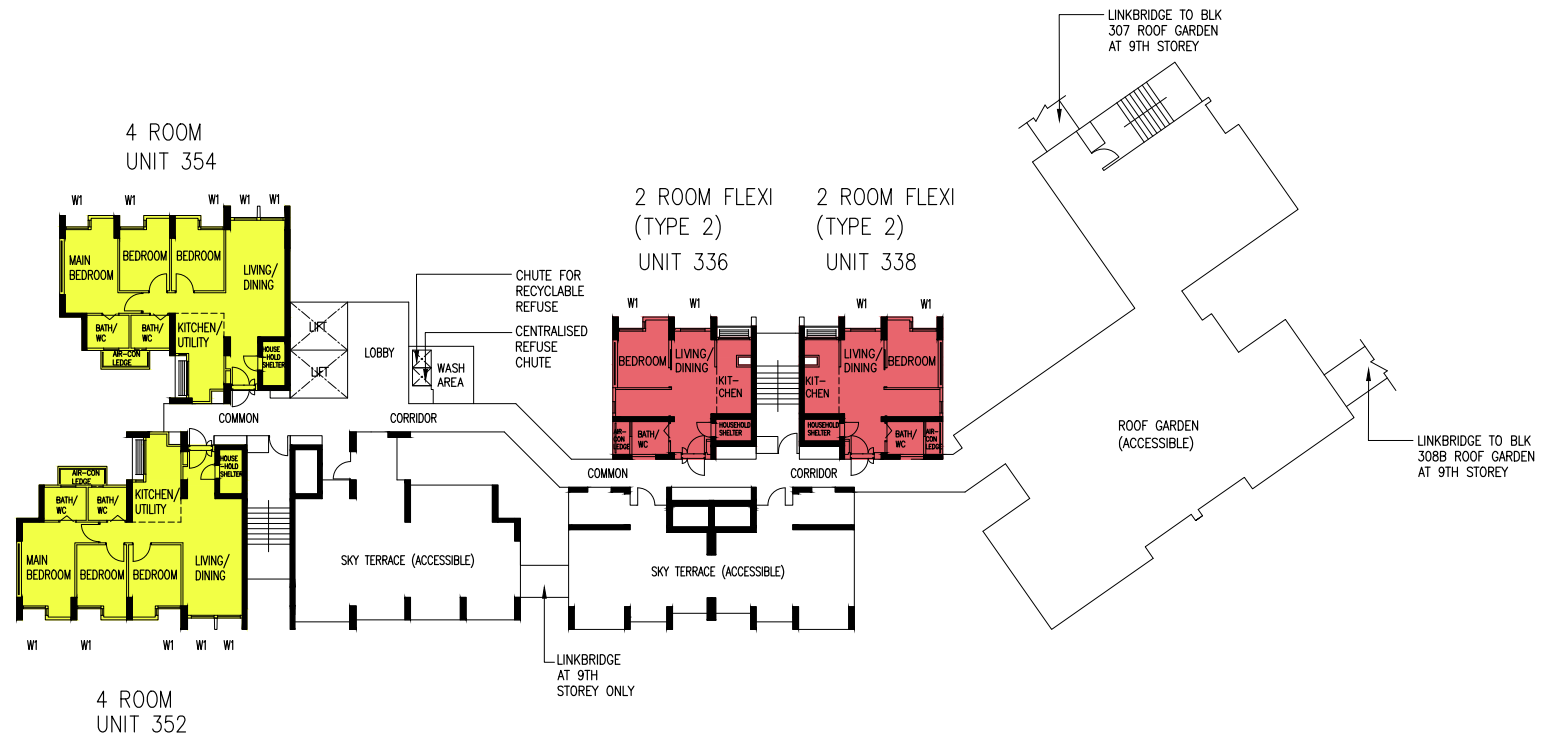
WINDOW LEGEND:

W1 FULL HEIGHT WINDOW (APPROX. 300mm HIGH PARAPET WALL)

UNLESS OTHERWISE INDICATED,
ALL WINDOWS WILL BE STANDARD HEIGHT WINDOWS

SCALE 0 2 4 6 8 10 METRES

THE COLOURED FLOOR PLAN IS NOT INTENDED
TO DEMARCATTE THE BOUNDARY OF THE FLAT



BLOCK 307C | 9TH STOREY FLOOR PLAN

UNITS AT 12TH STOREY ARE HIGHER THAN THE MAIN ROOF GARDEN LEVEL OF BLK 307

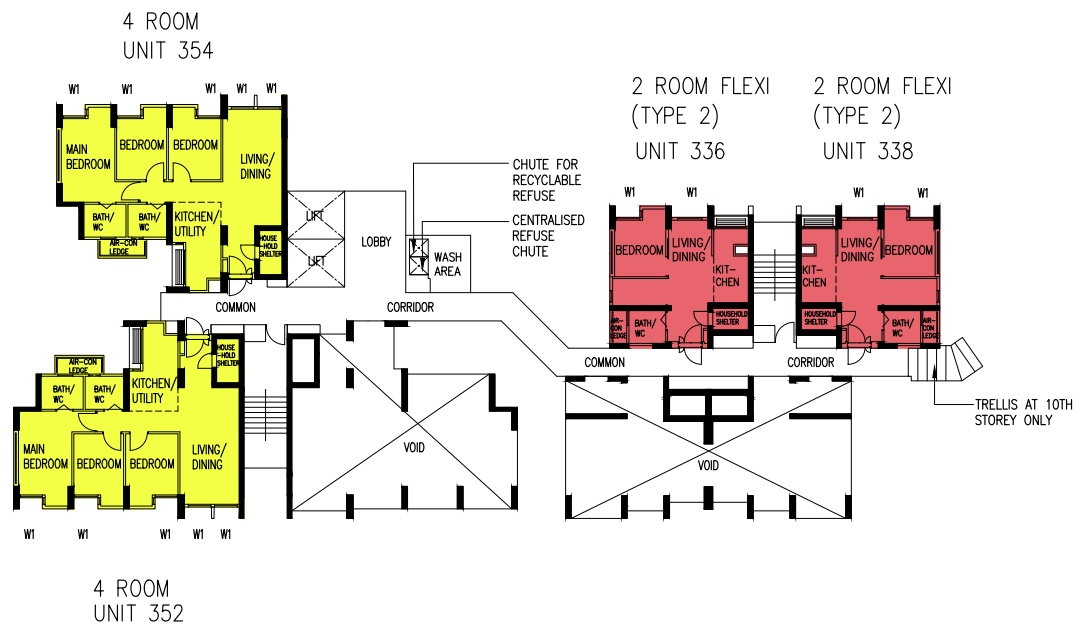
WINDOW LEGEND:

W1 FULL HEIGHT WINDOW (APPROX. 300mm HIGH PARAPET WALL)

UNLESS OTHERWISE INDICATED,
ALL WINDOWS WILL BE STANDARD HEIGHT WINDOWS

SCALE 0 2 4 6 8 10 METRES

THE COLOURED FLOOR PLAN IS NOT INTENDED
TO DEMARCATTE THE BOUNDARY OF THE FLAT



BLOCK 307C | 10TH STOREY FLOOR PLAN

UNITS AT 12TH STOREY ARE HIGHER THAN THE MAIN ROOF GARDEN LEVEL OF BLK 307

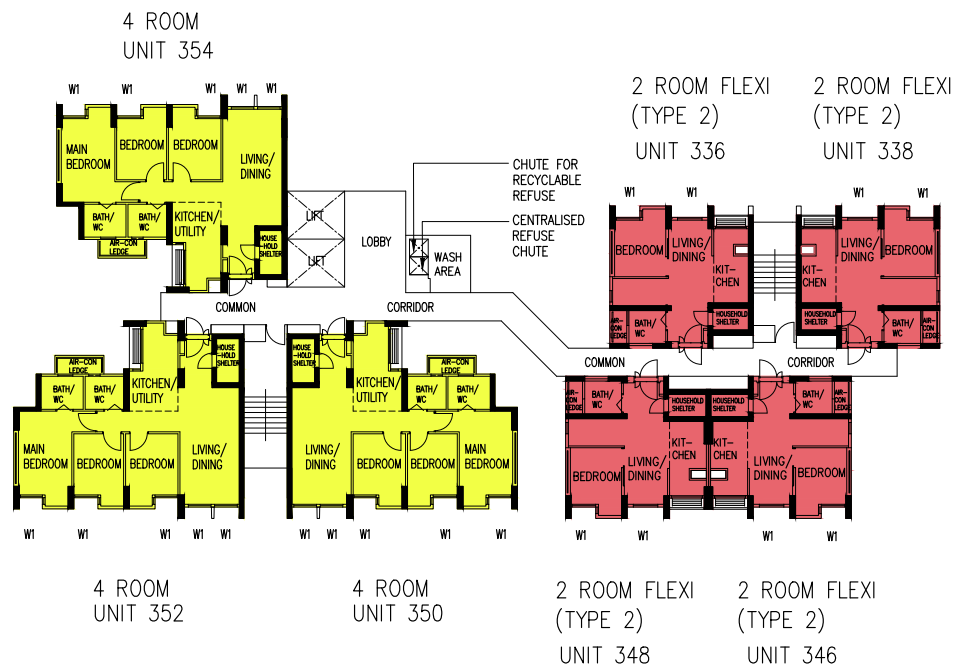
WINDOW LEGEND:

W1 FULL HEIGHT WINDOW (APPROX. 300mm HIGH PARAPET WALL)

UNLESS OTHERWISE INDICATED,
ALL WINDOWS WILL BE STANDARD HEIGHT WINDOWS

SCALE 0 2 4 6 8 10 METRES

THE COLOURED FLOOR PLAN IS NOT INTENDED
TO DEMARCATTE THE BOUNDARY OF THE FLAT



BLOCK 307C | 11TH & 12TH STOREY FLOOR PLAN

UNITS AT 12TH STOREY ARE HIGHER THAN THE MAIN ROOF GARDEN LEVEL OF BLK 307

WINDOW LEGEND:

W1 FULL HEIGHT WINDOW (APPROX. 300mm HIGH PARAPET WALL)

UNLESS OTHERWISE INDICATED,
ALL WINDOWS WILL BE STANDARD HEIGHT WINDOWS

SCALE 0 2 4 6 8 10 METRES

THE COLOURED FLOOR PLAN IS NOT INTENDED
TO DEMARCATTE THE BOUNDARY OF THE FLAT



BLOCK 308A | 2ND STOREY FLOOR PLAN

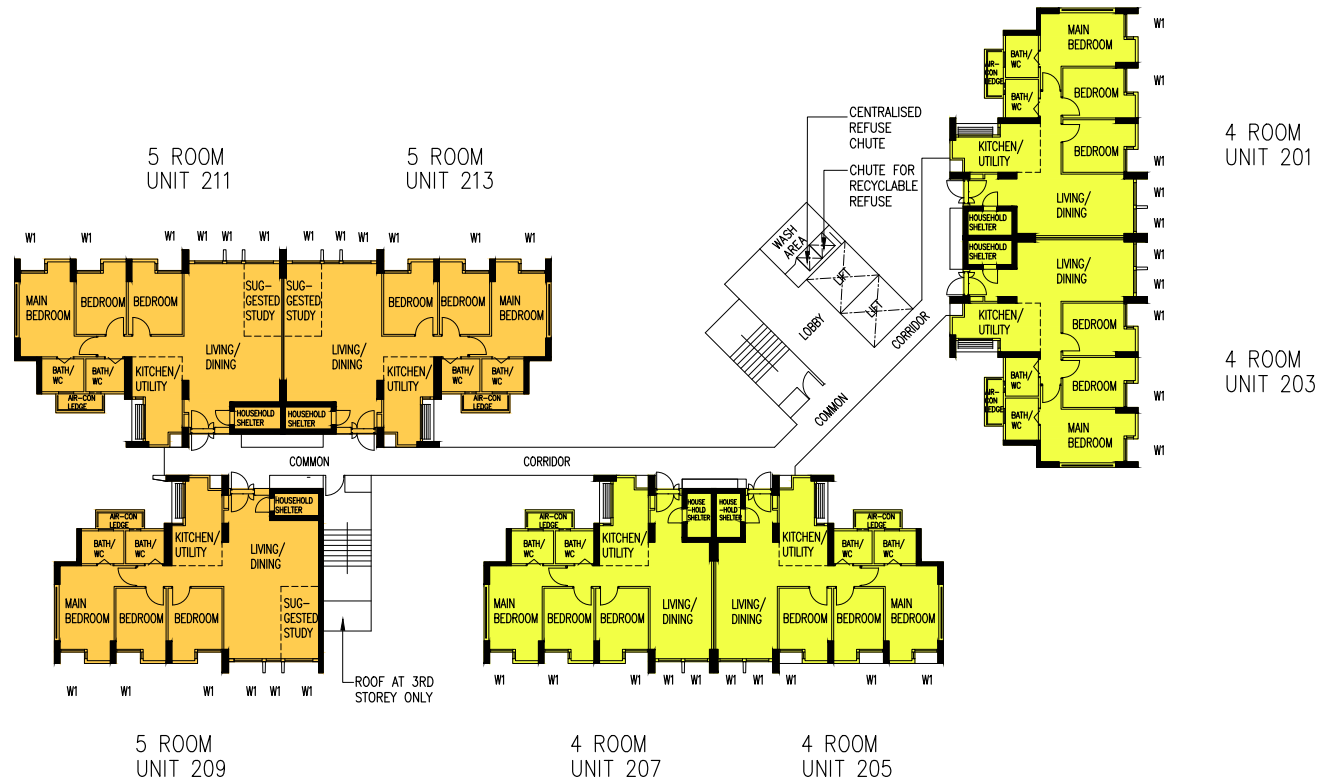
WINDOW LEGEND:

W1 FULL HEIGHT WINDOW (APPROX. 300mm HIGH PARAPET WALL)

UNLESS OTHERWISE INDICATED,
ALL WINDOWS WILL BE STANDARD HEIGHT WINDOWS

SCALE 0 2 4 6 8 10 METRES

THE COLOURED FLOOR PLAN IS NOT INTENDED
TO DEMARCATTE THE BOUNDARY OF THE FLAT



BLOCK 308A | 3RD, 5TH, 8TH, 9TH, 12TH & 13TH STOREY FLOOR PLAN

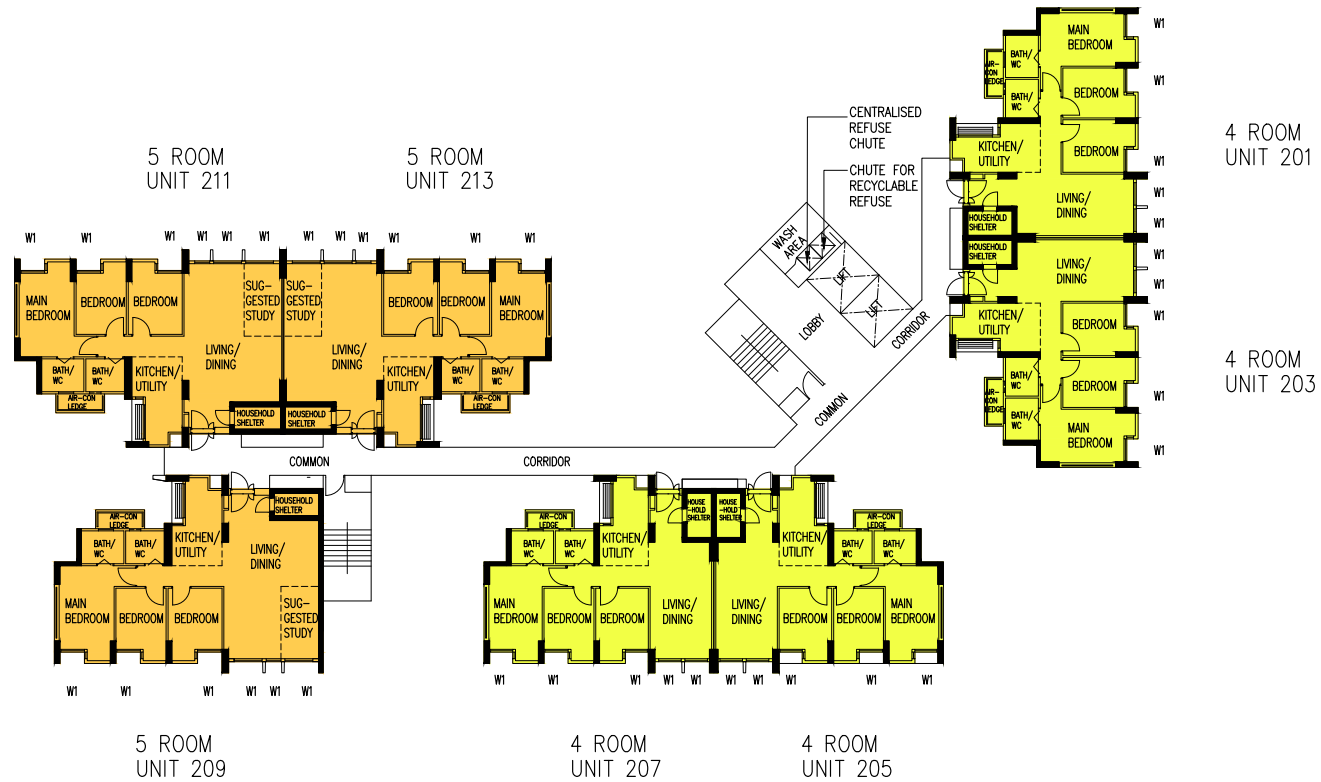
WINDOW LEGEND:

W1 FULL HEIGHT WINDOW (APPROX. 300mm HIGH PARAPET WALL)

UNLESS OTHERWISE INDICATED,
ALL WINDOWS WILL BE STANDARD HEIGHT WINDOWS

SCALE 0 2 4 6 8 10 METRES

THE COLOURED FLOOR PLAN IS NOT INTENDED
TO DEMARCATATE THE BOUNDARY OF THE FLAT



BLOCK 308A | 4TH, 6TH, 7TH, 10TH & 11TH STOREY FLOOR PLAN

WINDOW LEGEND:

W1 FULL HEIGHT WINDOW (APPROX. 300mm HIGH PARAPET WALL)

UNLESS OTHERWISE INDICATED,
ALL WINDOWS WILL BE STANDARD HEIGHT WINDOWS

SCALE 0 2 4 6 8 10 METRES

THE COLOURED FLOOR PLAN IS NOT INTENDED
TO DEMARCATTE THE BOUNDARY OF THE FLAT



BLOCK 308B | 2ND STOREY FLOOR PLAN

UNITS AT AND ABOVE 11TH STOREY ARE HIGHER THAN THE MAIN ROOF GARDEN LEVEL OF BLK 307

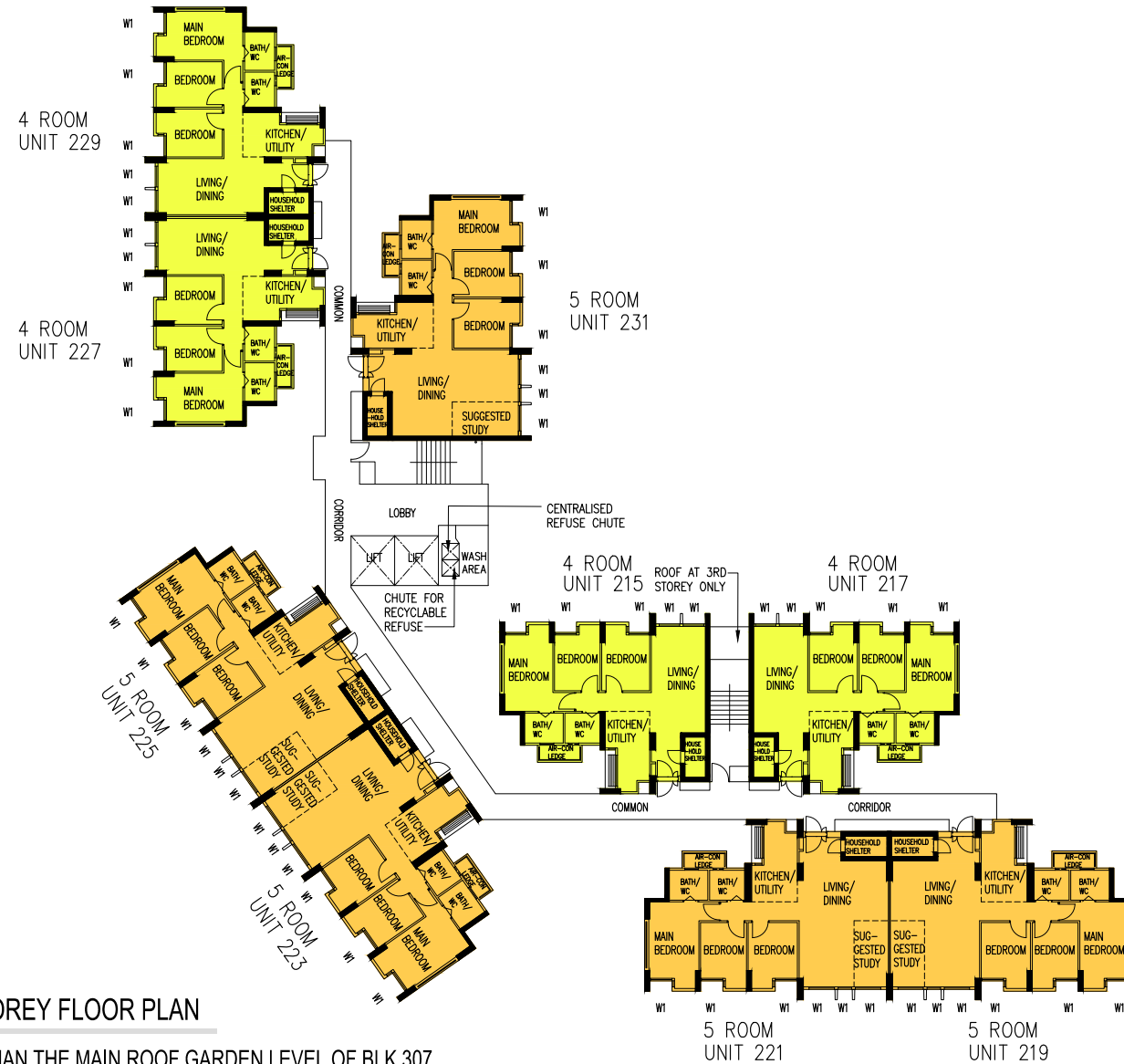
WINDOW LEGEND:

W1 FULL HEIGHT WINDOW (APPROX. 300mm HIGH PARAPET WALL)

UNLESS OTHERWISE INDICATED,
ALL WINDOWS WILL BE STANDARD HEIGHT WINDOWS

SCALE 0 2 4 6 8 10 METRES

THE COLOURED FLOOR PLAN IS NOT INTENDED
TO DEMARCATTE THE BOUNDARY OF THE FLAT



BLOCK 308B | 3RD, 5TH & 6TH STOREY FLOOR PLAN

UNITS AT AND ABOVE 11TH STOREY ARE HIGHER THAN THE MAIN ROOF GARDEN LEVEL OF BLK 307

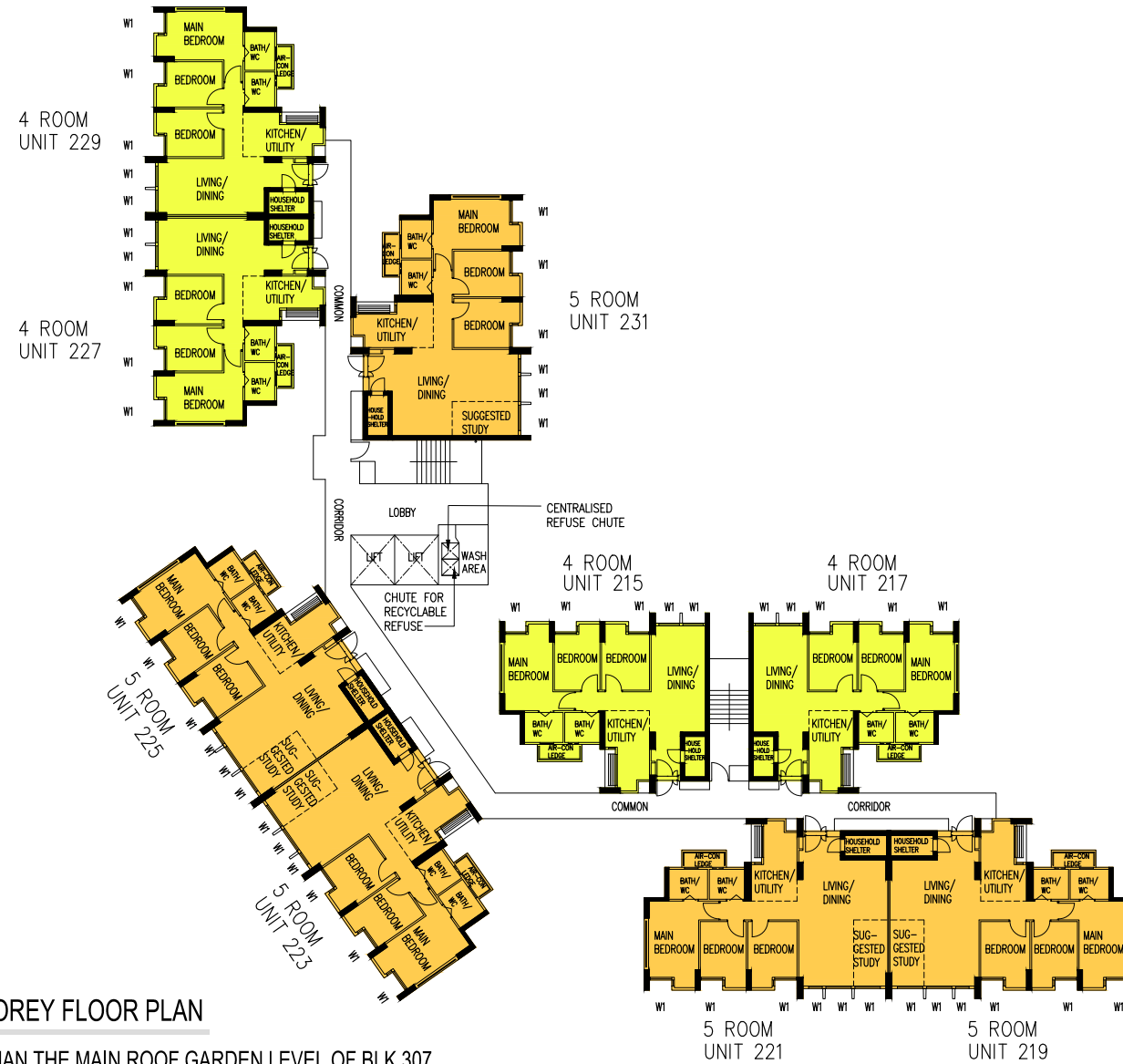
WINDOW LEGEND:

W1 FULL HEIGHT WINDOW (APPROX. 300mm HIGH PARAPET WALL)

UNLESS OTHERWISE INDICATED,
ALL WINDOWS WILL BE STANDARD HEIGHT WINDOWS

SCALE 0 2 4 6 8 10 METRES

THE COLOURED FLOOR PLAN IS NOT INTENDED
TO DEMARCATTE THE BOUNDARY OF THE FLAT



BLOCK 308B | 4TH, 7TH & 8TH STOREY FLOOR PLAN

UNITS AT AND ABOVE 11TH STOREY ARE HIGHER THAN THE MAIN ROOF GARDEN LEVEL OF BLK 307

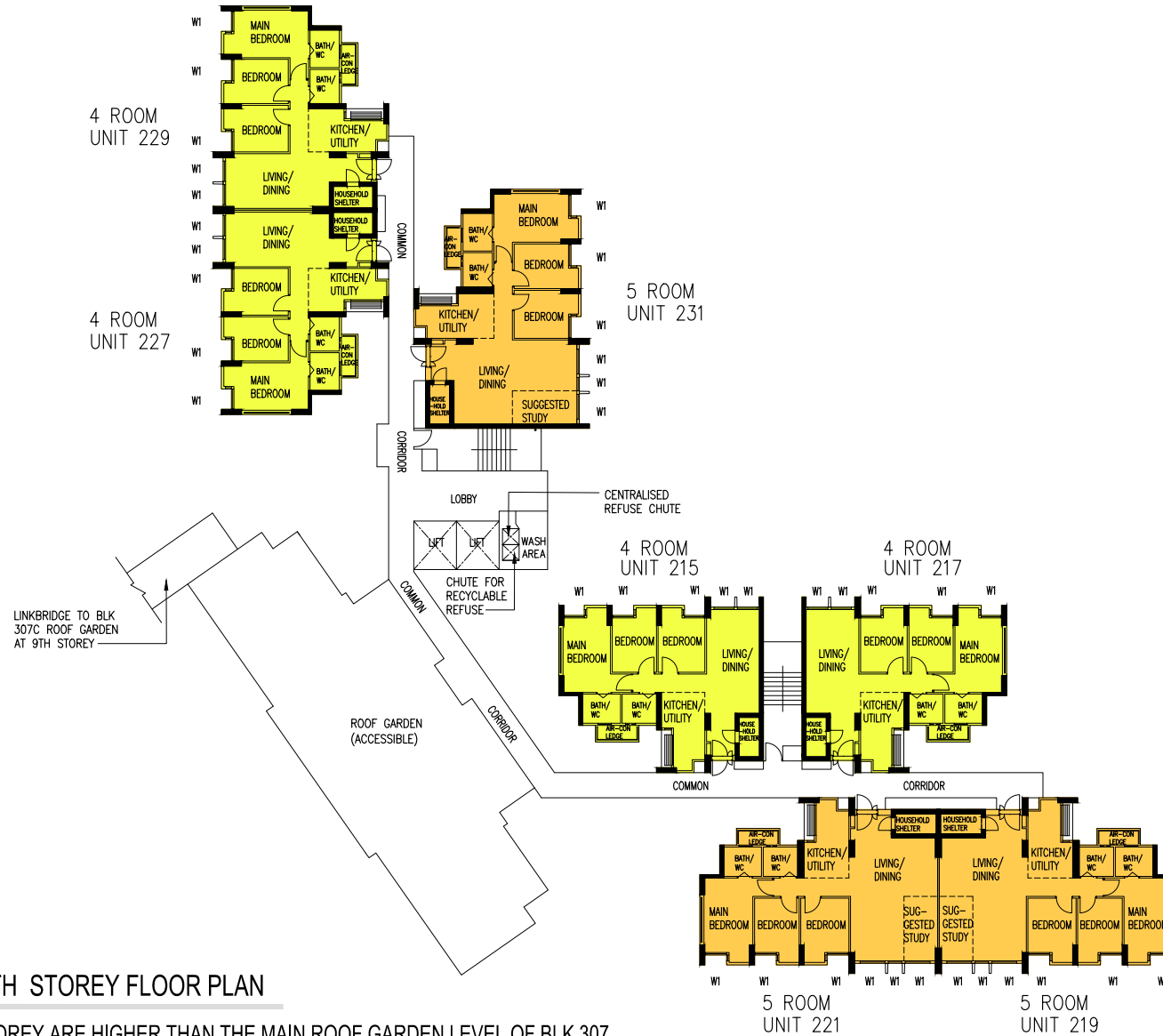
WINDOW LEGEND:

W1 FULL HEIGHT WINDOW (APPROX. 300mm HIGH PARAPET WALL)

UNLESS OTHERWISE INDICATED,
ALL WINDOWS WILL BE STANDARD HEIGHT WINDOWS

SCALE 0 2 4 6 8 10 METRES

THE COLOURED FLOOR PLAN IS NOT INTENDED
TO DEMARCATTE THE BOUNDARY OF THE FLAT



BLOCK 308B | 9TH STOREY FLOOR PLAN

UNITS AT AND ABOVE 11TH STOREY ARE HIGHER THAN THE MAIN ROOF GARDEN LEVEL OF BLK 307

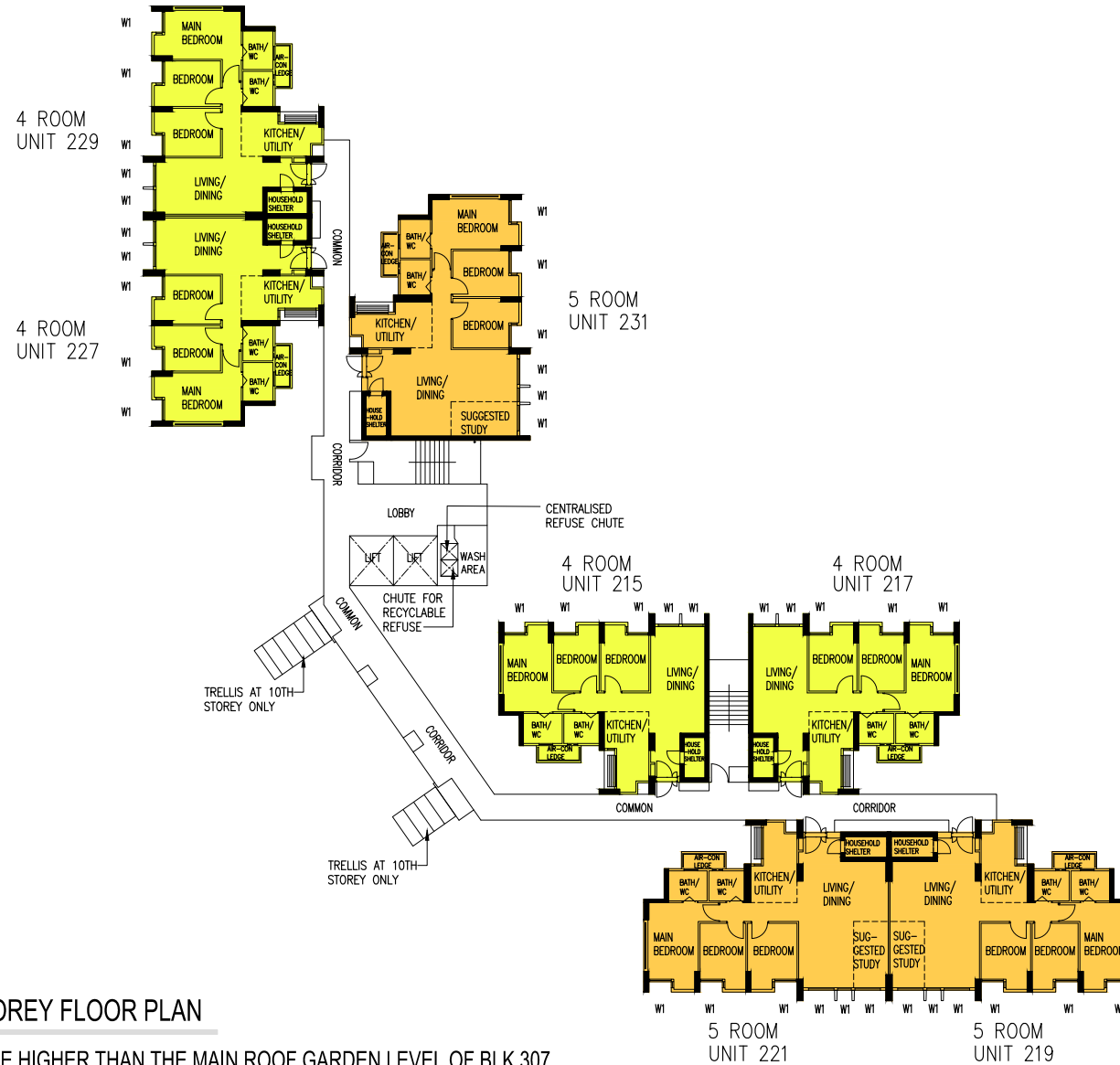
WINDOW LEGEND:

W1 FULL HEIGHT WINDOW (APPROX. 300mm HIGH PARAPET WALL)

UNLESS OTHERWISE INDICATED,
ALL WINDOWS WILL BE STANDARD HEIGHT WINDOWS

SCALE 0 2 4 6 8 10 METRES

THE COLOURED FLOOR PLAN IS NOT INTENDED
TO DEMARCATATE THE BOUNDARY OF THE FLAT



BLOCK 308B | 10TH STOREY FLOOR PLAN

UNITS AT AND ABOVE 11TH STOREY ARE HIGHER THAN THE MAIN ROOF GARDEN LEVEL OF BLK 307

WINDOW LEGEND:

W1 FULL HEIGHT WINDOW (APPROX. 300mm HIGH PARAPET WALL)

UNLESS OTHERWISE INDICATED,
ALL WINDOWS WILL BE STANDARD HEIGHT WINDOWS

SCALE 0 2 4 6 8 10 METRES

THE COLOURED FLOOR PLAN IS NOT INTENDED
TO DEMARCATATE THE BOUNDARY OF THE FLAT



BLOCK 308B | 11TH STOREY FLOOR PLAN

UNITS AT AND ABOVE 11TH STOREY ARE HIGHER THAN THE MAIN ROOF GARDEN LEVEL OF BLK 307

WINDOW LEGEND:

FULL HEIGHT WINDOW (APPROX. 300mm HIGH PARAPET WALL)

UNLESS OTHERWISE INDICATED,
ALL WINDOWS WILL BE STANDARD HEIGHT WINDOWS

SCALE 0 2 4 6 8 10 METRES

THE COLOURED FLOOR PLAN IS NOT INTENDED
TO DEMARCATTE THE BOUNDARY OF THE FLAT



BLOCK 308B | 12TH STOREY FLOOR PLAN

UNITS AT AND ABOVE 11TH STOREY ARE HIGHER THAN THE MAIN ROOF GARDEN LEVEL OF BLK 307

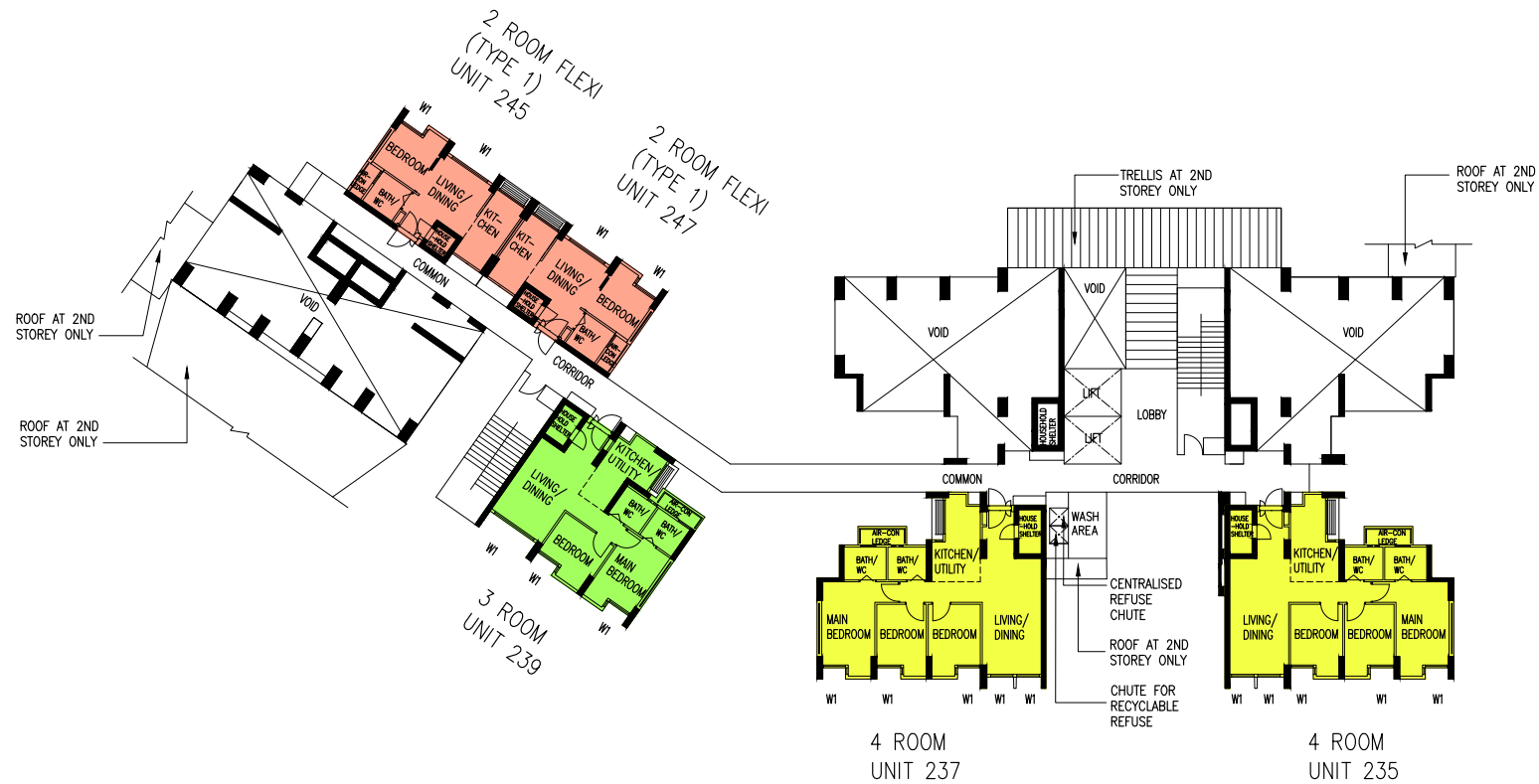
WINDOW LEGEND:

FULL HEIGHT WINDOW (APPROX. 300mm HIGH PARAPET WALL)

UNLESS OTHERWISE INDICATED,
ALL WINDOWS WILL BE STANDARD HEIGHT WINDOWS

SCALE 0 2 4 6 8 10 METRES

THE COLOURED FLOOR PLAN IS NOT INTENDED
TO DEMARCAT THE BOUNDARY OF THE FLAT



BLOCK 308C | 2ND STOREY FLOOR PLAN

UNITS AT AND ABOVE 9TH STOREY ARE HIGHER THAN THE MAIN ROOF GARDEN LEVEL OF BLOCK 307

WINDOW LEGEND:

W1 FULL HEIGHT WINDOW (APPROX. 300mm HIGH PARAPET WALL)

UNLESS OTHERWISE INDICATED,
ALL WINDOWS WILL BE STANDARD HEIGHT WINDOWS

SCALE 0 2 4 6 8 10 METRES

THE COLOURED FLOOR PLAN IS NOT INTENDED
TO DEMARCATTE THE BOUNDARY OF THE FLAT



BLOCK 308C | 3RD TO 6TH STOREY FLOOR PLAN

UNITS AT AND ABOVE 9TH STOREY ARE HIGHER THAN THE MAIN ROOF GARDEN LEVEL OF BLOCK 307

WINDOW LEGEND:

W1 FULL HEIGHT WINDOW (APPROX. 300mm HIGH PARAPET WALL)

UNLESS OTHERWISE INDICATED,
ALL WINDOWS WILL BE STANDARD HEIGHT WINDOWS

SCALE 0 2 4 6 8 10 METRES

THE COLOURED FLOOR PLAN IS NOT INTENDED
TO DEMARCATTE THE BOUNDARY OF THE FLAT



BLOCK 308C | 7TH & 8TH STOREY FLOOR PLAN

UNITS AT AND ABOVE 9TH STOREY ARE HIGHER THAN THE MAIN ROOF GARDEN LEVEL OF BLOCK 307

WINDOW LEGEND:

W1 FULL HEIGHT WINDOW (APPROX. 300mm HIGH PARAPET WALL)

UNLESS OTHERWISE INDICATED,
ALL WINDOWS WILL BE STANDARD HEIGHT WINDOWS

SCALE 0 2 4 6 8 10 METRES

THE COLOURED FLOOR PLAN IS NOT INTENDED
TO DEMARCATTE THE BOUNDARY OF THE FLAT



BLOCK 308C | 9TH STOREY FLOOR PLAN

UNITS AT AND ABOVE 9TH TOREY ARE HIGHER THAN THE MAIN ROOF GARDEN LEVEL OF BLOCK 307

WINDOW LEGEND:

W1 FULL HEIGHT WINDOW (APPROX. 300mm HIGH PARAPET WALL)

UNLESS OTHERWISE INDICATED,
ALL WINDOWS WILL BE STANDARD HEIGHT WINDOWS

SCALE 0 2 4 6 8 10 METRES

THE COLOURED FLOOR PLAN IS NOT INTENDED
TO DEMARCATATE THE BOUNDARY OF THE FLAT



BLOCK 308C | 10TH TO 14 STOREY FLOOR PLAN

UNITS AT AND ABOVE 9TH TOREY ARE HIGHER THAN THE MAIN ROOF GARDEN LEVEL OF BLOCK 307

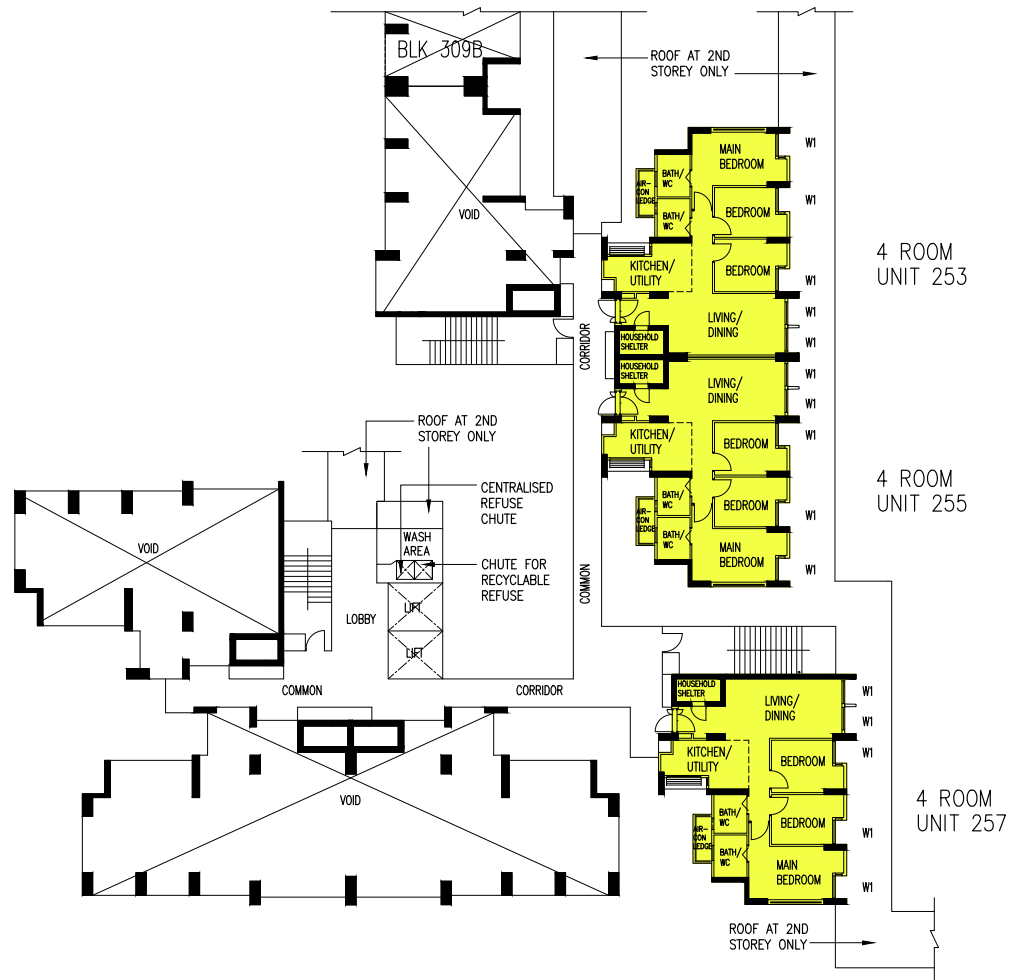
WINDOW LEGEND:

W1 FULL HEIGHT WINDOW (APPROX. 300mm HIGH PARAPET WALL)

UNLESS OTHERWISE INDICATED,
ALL WINDOWS WILL BE STANDARD HEIGHT WINDOWS

SCALE 0 2 4 6 8 10 METRES

THE COLOURED FLOOR PLAN IS NOT INTENDED
TO DEMARCATTE THE BOUNDARY OF THE FLAT



BLOCK 309A | 2ND STOREY FLOOR PLAN

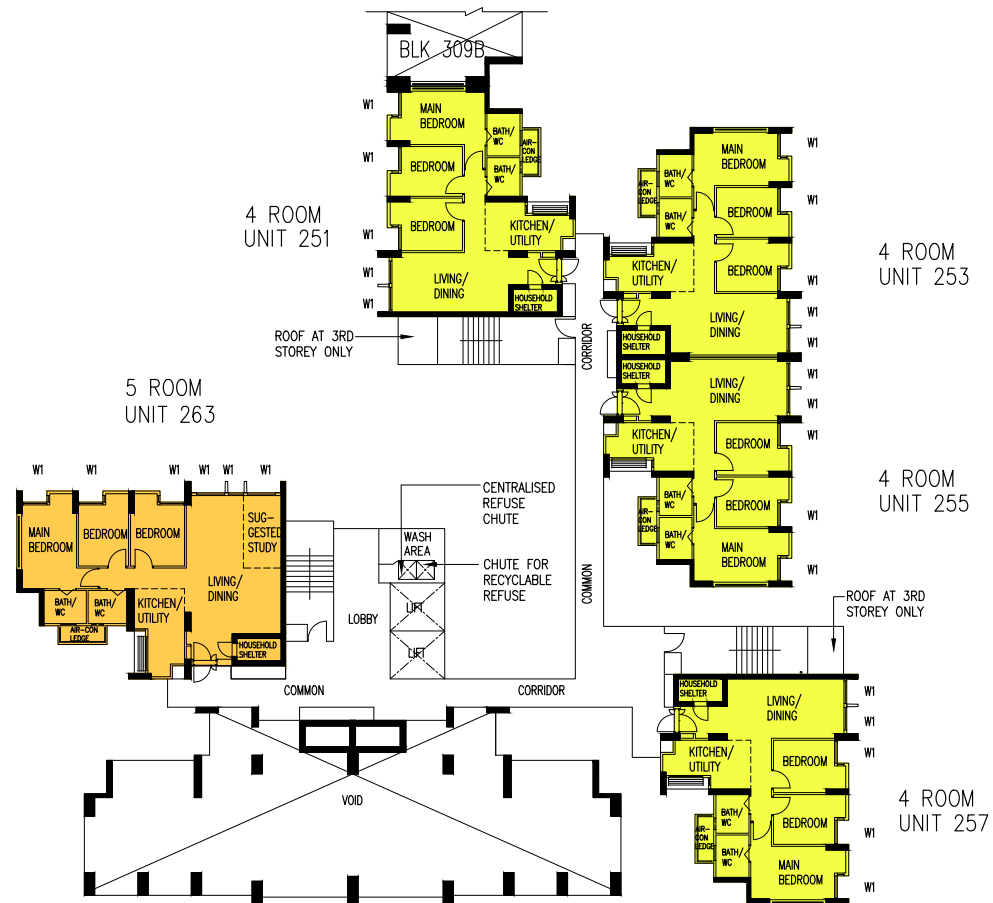
WINDOW LEGEND:

W1 FULL HEIGHT WINDOW (APPROX. 300mm HIGH PARAPET WALL)

UNLESS OTHERWISE INDICATED,
ALL WINDOWS WILL BE STANDARD HEIGHT WINDOWS

SCALE 0 2 4 6 8 10 METRES

THE COLOURED FLOOR PLAN IS NOT INTENDED
TO DEMARCATATE THE BOUNDARY OF THE FLAT



BLOCK 309A | 3RD STOREY FLOOR PLAN

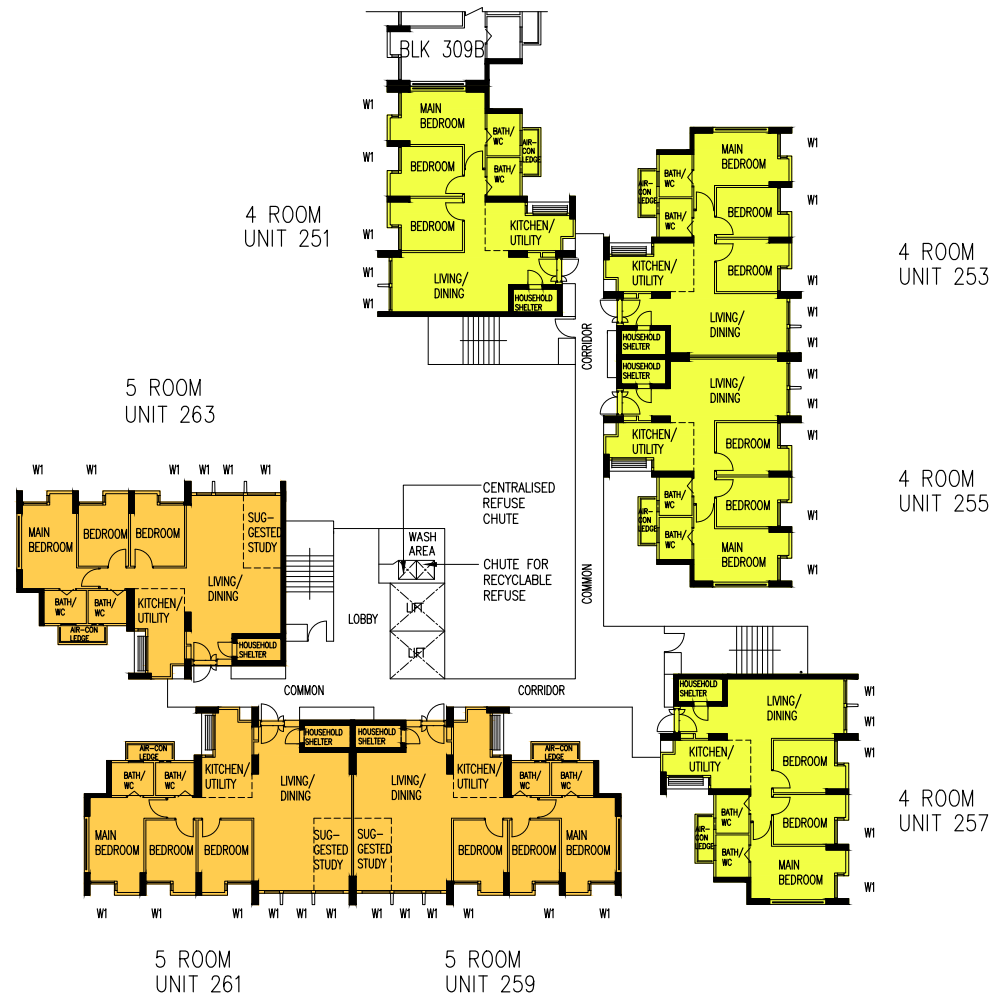
WINDOW LEGEND:

W1 FULL HEIGHT WINDOW (APPROX. 300mm HIGH PARAPET WALL)

UNLESS OTHERWISE INDICATED,
ALL WINDOWS WILL BE STANDARD HEIGHT WINDOWS

SCALE 0 2 4 6 8 10 METRES

THE COLOURED FLOOR PLAN IS NOT INTENDED
TO DEMARCATTE THE BOUNDARY OF THE FLAT



BLOCK 309A | 4TH, 6TH, 7TH, 10TH & 11TH STOREY FLOOR PLAN

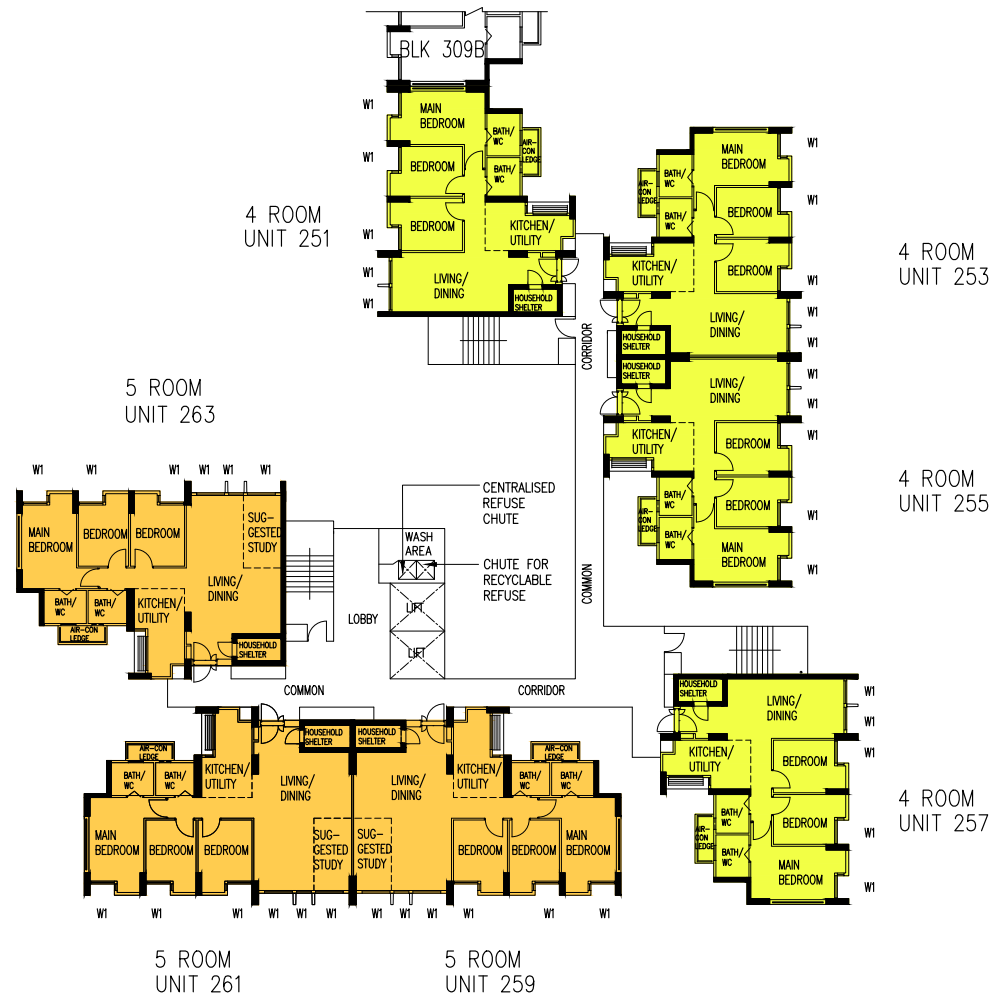
WINDOW LEGEND:

W1 FULL HEIGHT WINDOW (APPROX. 300mm HIGH PARAPET WALL)

UNLESS OTHERWISE INDICATED,
ALL WINDOWS WILL BE STANDARD HEIGHT WINDOWS

SCALE 0 2 4 6 8 10 METRES

THE COLOURED FLOOR PLAN IS NOT INTENDED
TO DEMARCATATE THE BOUNDARY OF THE FLAT



BLOCK 309A | 5TH, 8TH, 9TH, 12TH & 13TH STOREY FLOOR PLAN

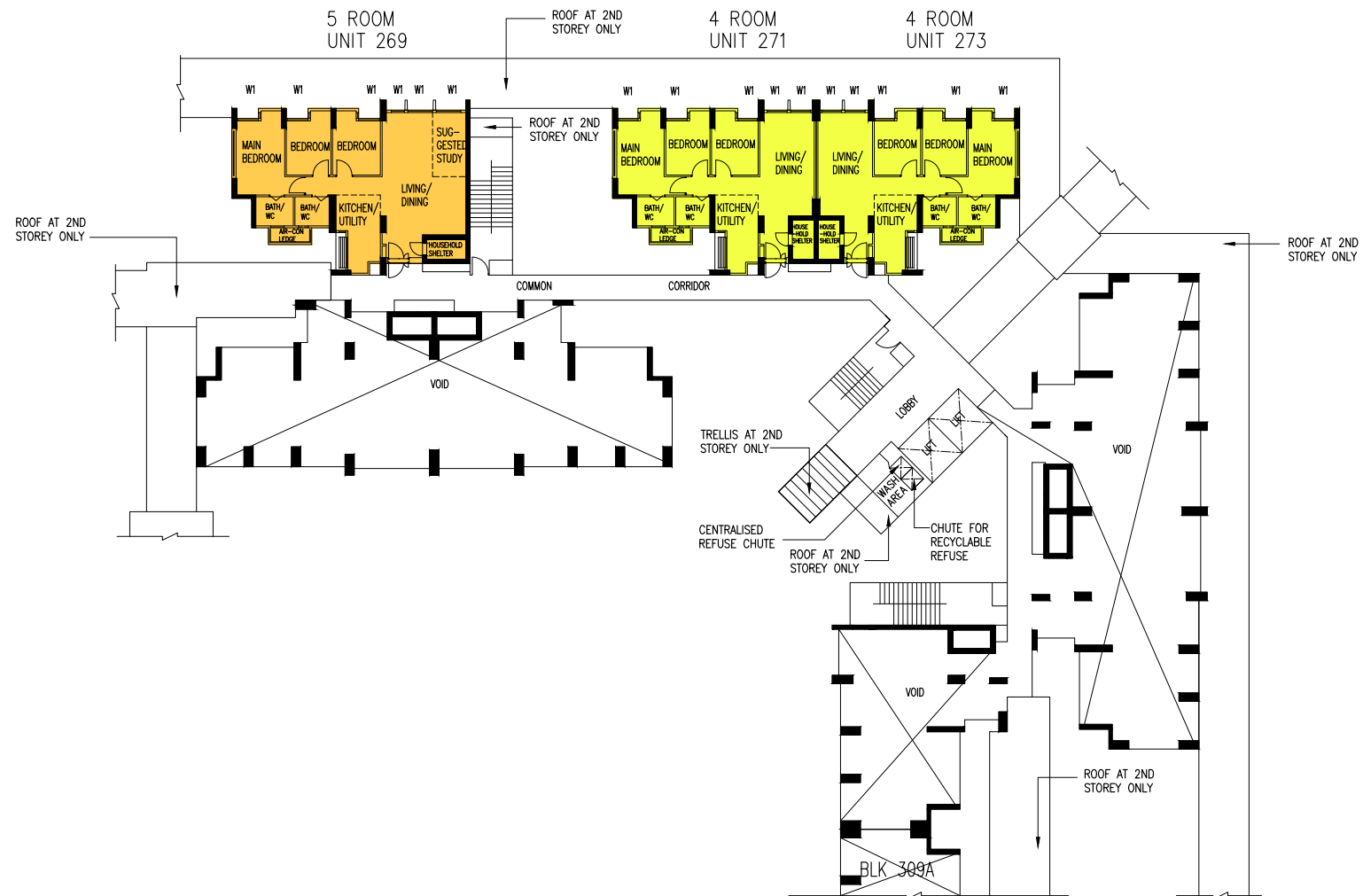
WINDOW LEGEND:

W1 FULL HEIGHT WINDOW (APPROX. 300mm HIGH PARAPET WALL)

UNLESS OTHERWISE INDICATED,
ALL WINDOWS WILL BE STANDARD HEIGHT WINDOWS

SCALE 0 2 4 6 8 10 METRES

THE COLOURED FLOOR PLAN IS NOT INTENDED
TO DEMARCATATE THE BOUNDARY OF THE FLAT



BLOCK 309B | 2ND STOREY FLOOR PLAN

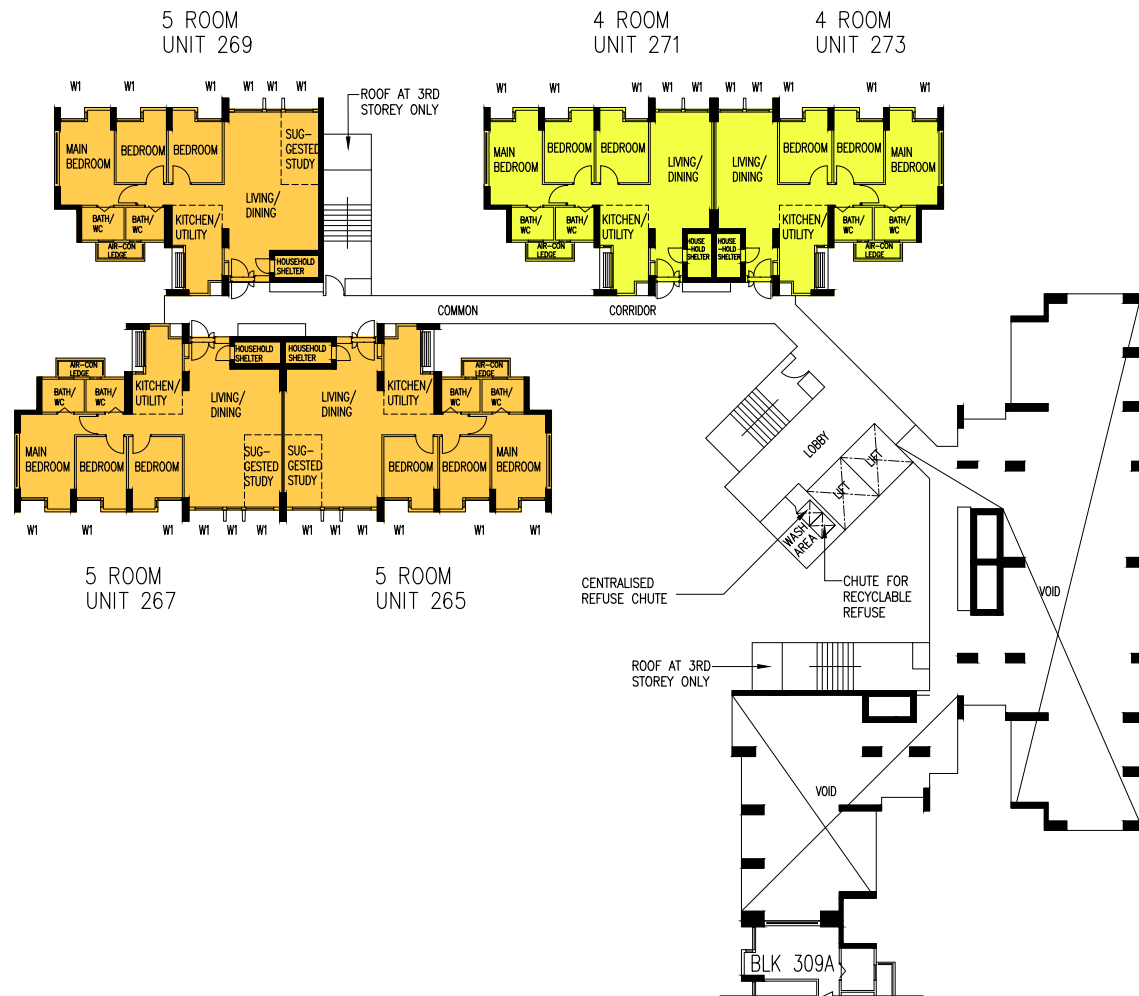
WINDOW LEGEND:

W1 FULL HEIGHT WINDOW (APPROX. 300mm HIGH PARAPET WALL)

UNLESS OTHERWISE INDICATED,
ALL WINDOWS WILL BE STANDARD HEIGHT WINDOWS

SCALE 0 2 4 6 8 10 METRES

THE COLOURED FLOOR PLAN IS NOT INTENDED
TO DEMARCATATE THE BOUNDARY OF THE FLAT



BLOCK 309B | 3RD STOREY FLOOR PLAN

WINDOW LEGEND:

W1 FULL HEIGHT WINDOW (APPROX. 300mm HIGH PARAPET WALL)

UNLESS OTHERWISE INDICATED,
ALL WINDOWS WILL BE STANDARD HEIGHT WINDOWS

SCALE 0 2 4 6 8 10 METRES

THE COLOURED FLOOR PLAN IS NOT INTENDED
TO DEMARCATATE THE BOUNDARY OF THE FLAT



BLOCK 309B | 4TH, 6TH, 7TH, 10TH & 11TH STOREY FLOOR PLAN

WINDOW LEGEND:

W1 FULL HEIGHT WINDOW (APPROX. 300mm HIGH PARAPET WALL)

UNLESS OTHERWISE INDICATED,
ALL WINDOWS WILL BE STANDARD HEIGHT WINDOWS

SCALE 0 2 4 6 8 10 METRES

THE COLOURED FLOOR PLAN IS NOT INTENDED
TO DEMARCATTE THE BOUNDARY OF THE FLAT



BLOCK 309B | 5TH, 8TH, 9TH, 12TH & 13TH STOREY FLOOR PLAN

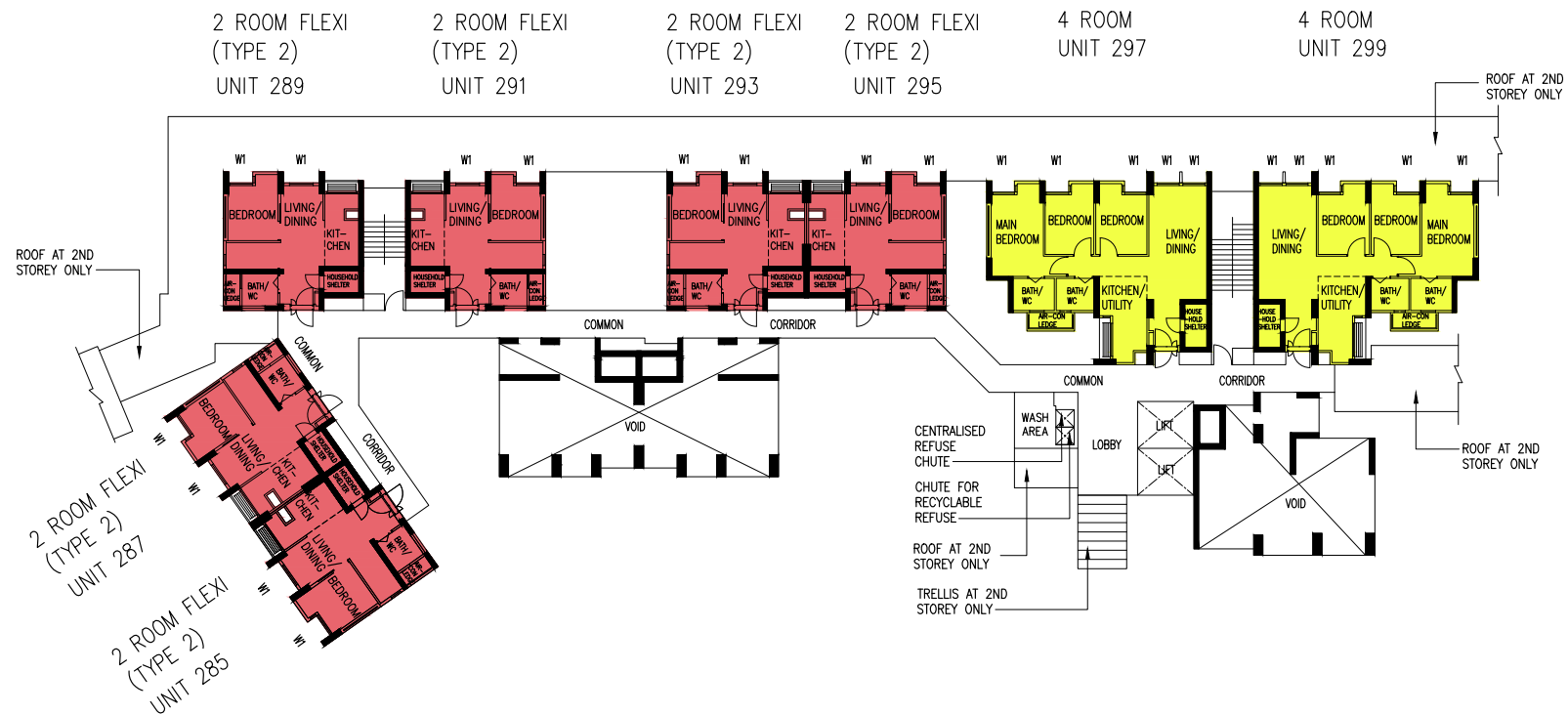
WINDOW LEGEND:

W1 FULL HEIGHT WINDOW (APPROX. 300mm HIGH PARAPET WALL)

UNLESS OTHERWISE INDICATED,
ALL WINDOWS WILL BE STANDARD HEIGHT WINDOWS

SCALE 0 2 4 6 8 10 METRES

THE COLOURED FLOOR PLAN IS NOT INTENDED
TO DEMARCATTE THE BOUNDARY OF THE FLAT



BLOCK 309C | 2ND STOREY FLOOR PLAN

UNITS AT AND ABOVE 12TH STOREY ARE HIGHER THAN THE MAIN ROOF GARDEN LEVEL OF BLK 307

WINDOW LEGEND:

W1 FULL HEIGHT WINDOW (APPROX. 300mm HIGH PARAPET WALL)


UNLESS OTHERWISE INDICATED,
ALL WINDOWS WILL BE STANDARD HEIGHT WINDOWS

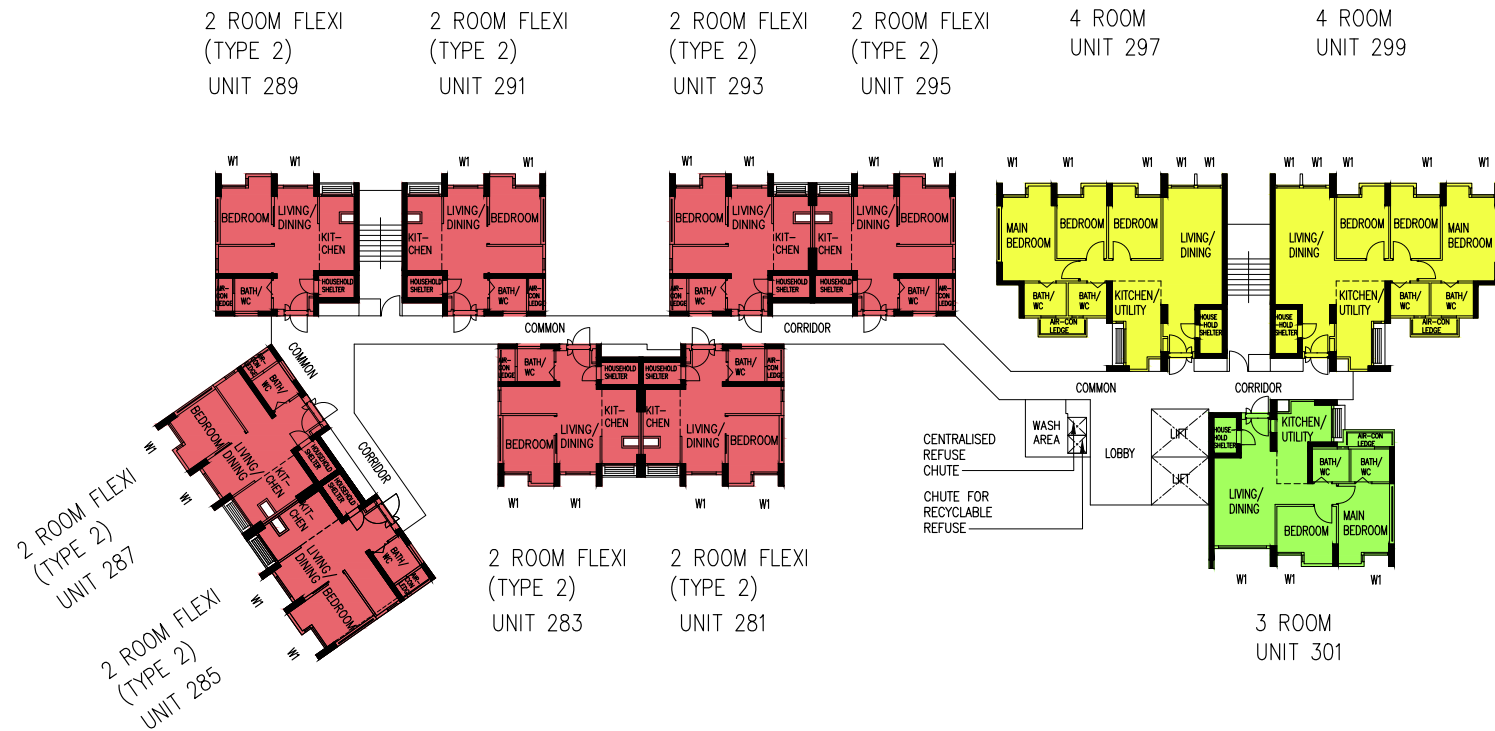
SCALE 0 2 4 6 8 10 METRES

THE COLOURED FLOOR PLAN IS NOT INTENDED
TO DEMARCATATE THE BOUNDARY OF THE FLAT

BLOCK 309C | 3RD TO 6TH STOREY FLOOR PLAN

UNITS AT AND ABOVE 12TH STOREY ARE HIGHER THAN THE MAIN ROOF GARDEN LEVEL OF BLK 307

<p>WINDOW LEGEND:</p> <p>W1 FULL HEIGHT WINDOW (APPROX. 300mm HIGH PARAPET WALL)</p>	<p>UNLESS OTHERWISE INDICATED, ALL WINDOWS WILL BE STANDARD HEIGHT WINDOWS</p>	<p>SCALE 0 2 4 6 8 10 METRES</p> 	<p>THE COLOURED FLOOR PLAN IS NOT INTENDED TO DEMARCATÉ THE BOUNDARY OF THE FLAT</p>
--	--	--	--



BLOCK 309C | 7TH & 8TH STOREY FLOOR PLAN

UNITS AT AND ABOVE 12TH STOREY ARE HIGHER THAN THE MAIN ROOF GARDEN LEVEL OF BLK 307

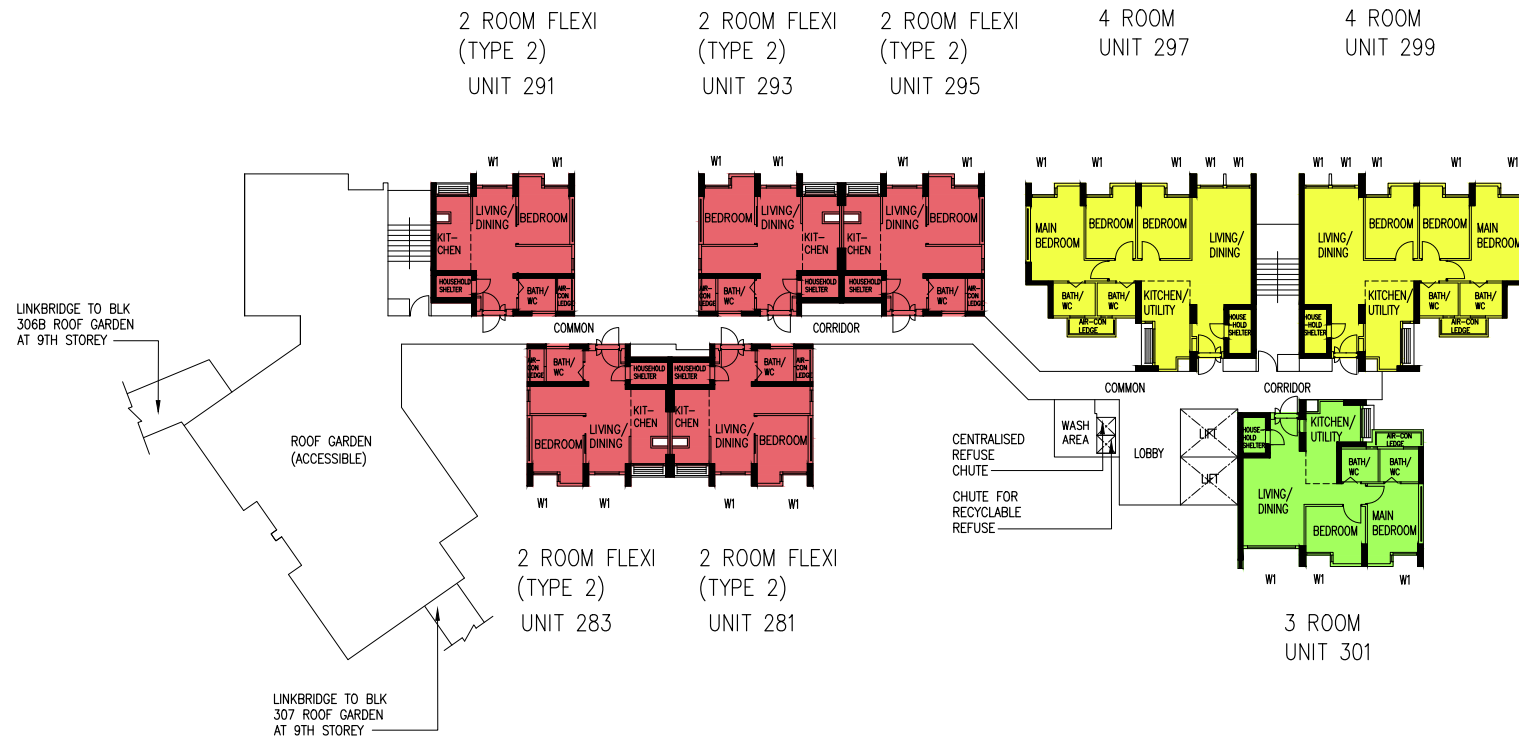
WINDOW LEGEND:

W1 FULL HEIGHT WINDOW (APPROX. 300mm HIGH PARAPET WALL)

UNLESS OTHERWISE INDICATED,
ALL WINDOWS WILL BE STANDARD HEIGHT WINDOWS

SCALE 0 2 4 6 8 10 METRES

THE COLOURED FLOOR PLAN IS NOT INTENDED
TO DEMARCATTE THE BOUNDARY OF THE FLAT



BLOCK 309C | 9TH STOREY FLOOR PLAN

UNITS AT AND ABOVE 12TH STOREY ARE HIGHER THAN THE MAIN ROOF GARDEN LEVEL OF BLK 307

WINDOW LEGEND:

W1 FULL HEIGHT WINDOW (APPROX. 300mm HIGH PARAPET WALL)

UNLESS OTHERWISE INDICATED,
ALL WINDOWS WILL BE STANDARD HEIGHT WINDOWS

SCALE 0 2 4 6 8 10 METRES

THE COLOURED FLOOR PLAN IS NOT INTENDED
TO DEMARCATATE THE BOUNDARY OF THE FLAT

GENERAL SPECIFICATIONS FOR PARC CLOVER @ TENGAH

For 2-room Flexi (short lease)

Foundation

Piled foundations.

Structure

Reinforced concrete structural framework with reinforced concrete slabs.

Roof

Reinforced concrete roof slab with precast concrete secondary roofing.

Walls

All external and internal walls are constructed with reinforced concrete/ precast panels/ drywall partition system/ precast lightweight concrete partitions.

Windows

Aluminium framed windows with tinted glass.

Doors

Entrance	: laminated timber door and metal gate
Bedroom	: laminated UPVC sliding partition/ door, where applicable
Bathroom/ WC	: laminated UPVC folding door
Household Shelter	: metal door
Living/ Dining	: laminated UPVC folding door (optional)

Finishes

Living/ Dining/ Bedroom Floor	: vinyl strip flooring with laminated UPVC skirting
Kitchen/ Bathroom/ WC/ Household Shelter Floor	: glazed porcelain tiles
Kitchen/ Bathroom/ WC Walls	: glazed porcelain tiles
Ceilings/ Other Walls	: skim coated or plastered and painted

Fittings

Quality Locksets
 Water Closet Suite
 Clothes Drying Rack
 Grab Bars
 Wash basin with tap mixer, bath/ shower mixer with shower set
 Built-in kitchen cabinets with induction hob and cooker hood, kitchen sink and dish drying rack (optional)
 Built-in Wardrobe (optional)
 Window Grilles (optional)
 Water Heater (optional)
 Lighting (optional)

Services

Gas services and concealed water supply pipes
 Exposed sanitary stacks at Air-con ledge
 Concealed electrical wiring to lighting and power points (including water heater and air-conditioning points)
 Television points
 Data points

Important Notes

- 1) The Household Shelter is designed for use as civil defence shelter. The walls, ceiling, floor and door of the Household Shelter shall not be hacked, drilled, altered or removed.
- 2) Laminated UPVC door frame shall be provided to all Bedroom and Bathroom/ WC door openings.
- 3) Any unused or unoccupied open spaces in front of or nearby/ adjacent to the flat units are not available for purchase and the HDB will not entertain any request from the flat owners to purchase and/ or enclose the unused or unoccupied open spaces.
- 4) The details of services in a flat, e.g. gas pipes, water pipes, sanitary stacks, electrical wiring, television points, data points, etc. are not indicated on the plans.

You are advised to visit HDB's website at www.hdb.gov.sg for information on renovation rules.

GENERAL SPECIFICATIONS FOR PARC CLOVER @ TENGAH

For 2-room Flexi, 3-room, 4-room, 5-room

Foundation

Piled foundations.

Structure

Reinforced concrete structural framework with reinforced concrete slabs.

Roof

Reinforced concrete roof slab with precast concrete secondary roofing.

Walls

All external and internal walls are constructed with reinforced concrete/ precast panels/ drywall partition system/ precast lightweight concrete partitions.

Windows

Aluminium framed windows with tinted glass.

Doors

Entrance	: laminated timber door and metal gate
Bedroom	: laminated UPVC door
	: laminated UPVC sliding partition/door for 2-room Flexi, where applicable
Bathroom/ WC	: laminated UPVC folding door
Household Shelter	: metal door

Finishes

Living/ Dining/ Bedroom Floor	: vinyl strip flooring with laminated UPVC skirting
Kitchen/ Utility/ Bathroom/ WC/ Household Shelter Floor	: glazed porcelain tiles
Kitchen/ Utility/ Bathroom/ WC Walls	: glazed porcelain tiles
Ceilings/ Other Walls	: skim coated or plastered and painted

Fittings

Quality Locksets
Water Closet Suite
Clothes Drying Rack
Wash basin with tap mixer, bath/ shower mixer with shower set

Services

Gas services and concealed water supply pipes
Exposed sanitary stacks (which can be located at Air-con ledge)
Concealed electrical wiring to lighting and power points (including water heater and air-conditioning points)
Television points
Data points

Important Notes

- 1) The Household Shelter is designed for use as civil defence shelter. The walls, ceiling, floor and door of the Household Shelter shall not be hacked, drilled, altered or removed.
- 2) Laminated UPVC door frame shall be provided to all Bedroom and Bathroom/ WC door openings.
- 3) Any unused or unoccupied open spaces in front of or nearby/ adjacent to the flat units are not available for purchase and the HDB will not entertain any request from the flat owners to purchase and/ or enclose the unused or unoccupied open spaces.
- 4) The details of services in a flat, e.g. gas pipes, water pipes, sanitary stacks, electrical wiring, television points, data points, etc. are not indicated on the plans.

You are advised to visit HDB's website at www.hdb.gov.sg for information on renovation rules.

DISCLAIMER

- 1) HDB owns the copyright in all information, maps, and plans of this brochure.
- 2) The content provided in this brochure is not intended to form part of any offer or contract for the sale of flats. They are provided for your general information only and are not statements or representations of fact.
- 3) Visual representations such as pictures, art renderings, depictions, illustrations, photographs, drawings, as well as other graphic representations and references are only artistic impressions. They are provided for your general information only, and are not representations of fact.
- 4) The information on this project, including but not limited to the dimensions, areas, plans, colour schemes, descriptions, and specifications, are subject to change or review without notice at our sole discretion or if required by the relevant authorities.
- 5) We may at any time, without any notice and at our sole discretion, change any aspect of this project, including but not limited to the omission, amalgamation, increase, or reduction of amenities and facilities, colour schemes, design features, and specifications.
- 6) We will not entertain any request for alteration of the layout or specifications of a flat to suit individual needs.
- 7) While reasonable care has been taken in providing the information in this brochure, we do not warrant its accuracy. We shall not be responsible in any way for any damage or loss suffered by any person whether directly or indirectly as a result of reliance on the said information or as a result of any error or omission therein.
- 8) The floor areas shown are scaled strata areas and are subject to final survey.
- 9) The surrounding land use, proposed facilities and their locations as shown in the maps and plans are indicative only and subject to change. They may include ancillary uses allowed under the Urban Redevelopment Authority’s prevailing Development Control guidelines. Housing projects may be located near roads, railways, airbases, and land used for non-residential purposes and hence, residents may experience higher noise levels.
- 10) We reserve the right to use or allow the use of any:

• Void deck of any apartment block

• Car park;

• Common property (such as precinct pavilion); or

• Standalone community building,


for:

• Future amenities/ facilities (such as child care centres, elderly-related facilities, education centres, residents’ network centres, and day activity centres);

• Commercial facilities (such as shops and eating houses);

• Mechanical and electrical rooms; and

• Such other facilities as we deem fit.

11) This brochure does not and is not intended to provide full and complete information of the guidelines or requirements of the relevant authorities. You are advised to approach the relevant authorities directly for full information and details of these guidelines and requirements.
- 

**HOUSING &
DEVELOPMENT
BOARD**

Copyright © Housing & Development Board
All rights reserved. December 2021

OPTIONAL COMPONENT SCHEME

(2-room Flexi Flats in projects with shorter waiting time)

The Optional Component Scheme (OCS) provides convenience for flat buyers, and is offered on an opt-in basis. Choose the OCS items you want before your flat selection appointment. The cost of the OCS items will be added to the selling price of the selected flat.

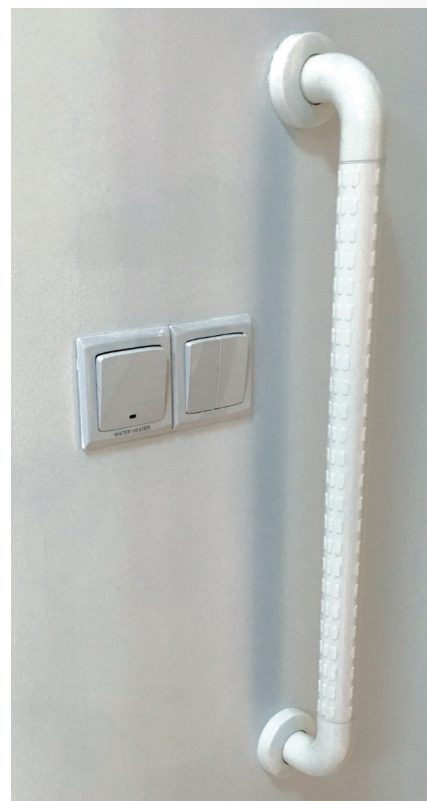
This project is built under Prefabricated Prefinished Volumetric Construction (PPVC).

All 2-room Flexi flats come with:

- Floor finishes in the living/ dining room, bedroom, bathroom, household shelter, and kitchen
- Wall tiles in the bathroom and kitchen
- Sliding partition/ door for bedroom, folding bathroom door
- Sanitary fittings, i.e. wash basin with tap mixer, shower set with bath/ shower mixer, and water closet suite



- Grab bars will be installed for all short-lease flats to assist elderly buyers in moving around the flats



Details on the Optional Component Scheme (OCS) package for short-lease 2-room Flexi flats are in the next page.

Disclaimer: All displays and images shown here are strictly for reference only and are subject to change without notice. The displays and images shown here are conceptual and indicative only and the colour schemes, design, dimensions, type, tonal differences and specifications may differ from the actual fittings installed in the flat.

Nov 2021

OPTIONAL COMPONENT SCHEME

(2-room Flexi Flats in projects with shorter waiting time)

(FOR SHORT-LEASE 2-ROOM FLEXI FLATS ONLY)

Elderly buyers of short-lease 2-room Flexi flats who wish to enjoy the convenience of having a flat in move-in condition can opt in for the following:

ELDERLY-FRIENDLY FITTINGS



- Built-in kitchen cabinets with induction hob and cooker hood, kitchen sink, tap and dish drying rack.



Here are some features of an induction hob:

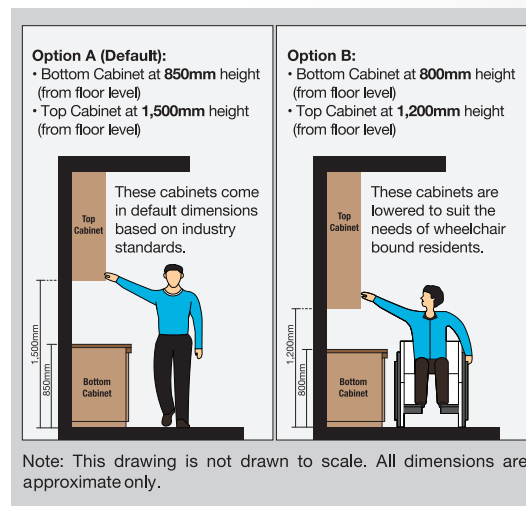
- It does not produce an open flame
- Its cooking zone cools down faster
- It is easier to clean than a gas hob
- As it has a flat surface, pots placed on an induction hob are less likely to topple over.

With these features, the use of the induction hob would promote a safer and cleaner environment.



- Kitchen cabinets come with mobile cabinets to provide knee space (especially for wheelchair users)
- Built-in bedroom wardrobe with a lower clothes hanging rod for easy reach

- An option to have a lower counter top height



- Folding door at the flexible space in the 2-room Flexi (Type 2) flats



OTHER FITTINGS



- Window grilles for safety and security



- Mirror



- Toilet roll holder



- Lighting



- Water heater

The cost of this OCS package will be added to the selling price of the selected flat.

Disclaimer: All displays and images shown here are strictly for reference only and are subject to change without notice. The displays and images shown here are conceptual and indicative only and the colour schemes, design, dimensions, type, tonal differences and specifications may differ from the actual fittings installed in the flat.